



COVERED IN THIS MONTH'S EDITION:

Recordings

Contact Details

Overview of PSHE Digest

What's Out There

Update from the PSHE Education Service

Update from National Partners

- Social Media Ban
- Schools Suspensions for Discrimination
- MHST Data
- New Enrichment Initiative
- Diet and Nutrition
- MenB Vaccine
- Sexual Health Update
- HPV Vaccine Success
- Update to Make It Mandatory Campaign
- New CCE Laws
- Mobile Phone Ban in Schools

Update from Local Partners

- Right Help, Right Time Document Launch
- School Food Survey - Pupil Voice Opportunity
- Asthma Friendly Schools Programme
- Summer Reading Challenge
- Wildfire Risks
- Local Newsletters

Information for Parents and Carers

- Online Safety

New to the Resource Library

Update on National Resources

- Help Shape Mental Support in Secondary Schools
- PSHE SEND Framework Launched
- Talk Relationships Webinar
- Include Me - I Want to Belong
- New PSHE Book on teaching Physical Health
- New Pornography Lesson from Brook Education
- Dog, Duck and Cat Newsletter
- COM Network Resource
- CEOP Update
- Boys Education Commission
- National Education Nature Park Funding
- DSM Delivery, Delivery Booklet

Awareness Days (July)

- Childhood Cancer Awareness Month
- Snack-tember
- Zero Waste Month
- #AskAboutAsthma
- World Suicide Prevention Day
- World First Aid Day
- World Sepsis Day
- Sexual Health Week
- Jeans for Genes Week
- Orchid Male Cancer Awareness Week
- Travel Wise Week
- National Fitness Day
- UK Savings Week
- Organ Donation Week
- Recycle Week
- International Day of Peace
- World Contraception Day
- NSPCC Kindness Challenge

Upcoming training

- New E-Learning
- New Podcasts
- New Documentaries and Dramas for CPD

Next Month & Link to Facebook Group

RECORDINGS

Last month, Laura from Rabbits RSE delivered a session on teaching about pornography, including sexual strangulation. The session, relevant for all PSHE educators, was recorded and is available to watch. Watch previous sessions here.

We also held our final PSHE Leads Network meeting of the year, focusing on reflecting on achievements and priorities for September. Thank you to everyone who joined; a recording is available for those who couldn't attend.

All our previous PSHE Leads Network Meetings are hosted on our website.

DO WE HAVE THE CORRECT DETAILS?

Please ensure we have the correct contact details for your PSHE lead as we prepare for a new academic year.

This ensures they continue to receive key updates, training and resources from the Service.



JOIN THE MAILING LIST

Receive the PSHE Digest directly to your inbox on the first termly Friday of each month by emailing

natalie@staffscvys.org.uk

OVERVIEW OF UPDATES IN THIS MONTH'S PSHE DIGEST

Update from the PSHE Education Service

- Dates of the PSHE Leads Network Meetings have been published. Book to reserve your place. - **MUST DO**
- Please book your space now to attend the Pan-Staffordshire PSHE Education Service Conference in November - early bird pricing available until September 2026 - **MUST DO**

Update from National Partners

- The Government announced a social media ban for under-16s. Read what's changing and the potential impact for education settings and PSHE.
- Latest data highlights a rise in suspensions due to LGBTQ+ and disabled bullying across UK schools. Read how PSHE can be a useful preventative tool and find resources that can support your setting.
- The DfE has published data on Mental Health Support Teams and the impact they are having.
- The government has announced a new initiative to ensure all children have access to enriching activities.
- Read the latest report from the Food Foundation on the diet for children and young people, and how PSHE can help children and young people.
- A time-limited MenB vaccination programme is being offered to Year 13 and those going to university following recent meningitis outbreaks.
- WHO have approved a new AI-assisted tool, ChatHRP, to answer questions about sexual health, and there has been a change in the law around abortions.
- Read about the latest evidence that showcases the success of the HPV vaccination
- Read the latest update from the Make It Mandatory Campaign.
- Find out about the new Child Criminal Exploitation Laws.
- The DfE's Mobile Phone in Schools guidance has come into force. Read how this links to PSHE.

Updates from Local Partners

- Staffordshire Safeguarding Children Partnership has launched the Right Help, Right Time framework - **SHARE WITH COLLEAGUES**.
- Take part in the School Food Survey that aims to find out about the experiences of children and young people and their food provision. - **MUST DO deadline 5pm 17/7/26**
- Find out how to register as an Asthma Friendly School.
- Promote the Summer Reading Challenge to children and families.
- Staffordshire Fire and Rescue Service share a Wildfire Risk warning and prevention tips.
- Round-up of local newsletters.

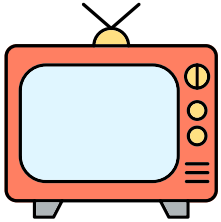
- Information for Parents and Carers
- Information and Resources to support Online Safety. - **PLEASE SHARE**

Resources

- New additions to the Resource Library from The Economist Educational Foundation around AI for 10-16-year-olds.
- National updates include: the launch of the PSHE Association's SEND Framework, NSPCC Talk Relationships, update from the Dog, Duck and Cat Trust, and CEOP Education (**Read CEOP Update before End of Term**).
- Find out if your school is eligible for National Education Nature Park funding.
- New Resources Include Me- I Want to Belong provides guidelines on how all children and young people can access cultural entitlement. New Book that provides practical guidance on delivering PSHE around Physical Health. Brook has a new external provider lesson on pornography. A new shareable resource about COM Networks for young people and professionals has been developed and DSM Foundation has created a booklet on their delivery options.
- Take Part in a RCT that aims to evaluate a whole-school approach to mental wellbeing - **MUST READ SECONDARY** and provide evidence as part of the Boys' Education Commission - **MUST DO**
- Links and suggestions for key September awareness dates.
- Training from local national providers, upcoming training from Staffordshire Safeguarding Children Partnership and Staffordshire Virtual School, plus details on e-learning, podcasts and documentaries added to our webpages.

WHAT'S OUT THERE...

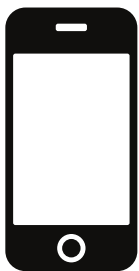
Whilst it is important to ensure PSHE is part of a planned curriculum, it can also be used to address needs in a local context and form part of conversations we have with children and young people about their experiences and what's happening in the world around them. We have collated some examples of topics that are being covered in TV, news and social media that children and young people may want to discuss.



- Elle, the prequel to Legally Blonde, is streaming now on Prime Video. The 8-part series follows Elle Woods in high school, where we learn about the life experiences that shaped her into the iconic young woman known in the Legally Blonde films. The programme will explore identity, relationships and emotional well-being.
- In EastEnders, Eve and Suki have fostered a child on an emergency placement, highlighting the experience for both the child and the foster parents.
- Lilo and Stitch and The Ring star Daveigh Chase died of AIDS.
- The Remarkable Life of Ibelin on Netflix tells the story of Mats Steen, who was born with Duchenne muscular dystrophy, a degenerative disorder that causes muscle loss over the course of a young person's life. A wheelchair user throughout his adolescence, with the exterior world increasingly difficult to traverse, Steen delves further and further into the virtual universe of World of Warcraft, and builds a life online. The programme shows how his parents discovered this online world and the impact it had on their son.



- A district and town councillor in Staffordshire has announced she will be standing down due to the abuse received on social media. Posts have become increasingly personal, targeting her as a woman, and for what she wears and what she looks like and have included the use of deepfakes.
- A student at a local college has been sentenced to 3 years and 11 months in a young offenders institution after threatening to bomb the college when he was 17 years old. This highlights the importance of developing help-seeking behaviours, as it was a peer who reported their concerns to college staff.
- The government has announced a social media ban for under 18s. Read this article from Newsround to help children understand the ban. See our National Updates for what the ban could mean to education settings and PSHE.
- The Home Office plans to stop children in the UK from taking or sharing nude images on their devices to reduce exploitation. Tech companies will be required to enable features that detect and block such content, with protections switched on by default and only disabled through age verification.
- The Centre for Young Lives has highlighted concerns about 'looksmoxing', an online trend focused on improving appearance that is gaining popularity among teenage boys. The report finds that some young people feel pressure to adopt extreme behaviours, with harmful content often embedded in everyday social media feeds and acting as a pathway to misogyny and extremism. It calls for greater recognition of this content as an online harm and increased support for schools to address masculinity, body image and online influences.



DATES FOR YOUR DIARY

Thank you to everyone who has joined our PSHE Leads Network meeting this past academic year. It has been great to share practice, discuss key themes around PSHE pedagogy and guiding principles, and learn from each other's experiences.

The network continues to be a valuable space for support, fresh ideas, and collaboration. Your contribution really makes a difference.

NEXT YEAR'S DATES

Please save the following dates:

- Tuesday 22nd September 2026
- Wednesday 27th January 2027
- Tuesday 23rd March 2027
- Wednesday 19th May 2027
- Tuesday 29th June 2027

All sessions are held via MS Teams and run from 4:00–5:00 pm.

You can book your place via Eventbrite to secure your space and receive the meeting link.

We'd love to see even more of you at future sessions, whether you're new to the role or a regular attendee. Everyone is welcome!



PSHE Education
STOKE-ON-TRENT & STAFFORDSHIRE

Conference

WEDNESDAY 11TH NOVEMBER

9:30AM–3:30PM

[CLICK TO BOOK](#)

STAFFORDSHIRE COUNTY SHOWGROUND

WESTON ROAD, STAFFORD ST18 0BD

Following last month's edition, thank you to everyone who has already booked their place at our second local PSHE Education Conference. We're delighted by the early interest and support.

We're excited to confirm that bookings remain open, and this year's event promises another engaging opportunity to explore best-practice PSHE, connect with colleagues, hear from inspiring guest contributors, and network with a range of support services.

After the fantastic feedback from our 2024 conference, we're looking forward to building on that success. A full programme will be shared in the new academic year, and we encourage colleagues to book early to avoid missing out.

Ticket information:

- Early Bird (before 1st September): £45
- General (from 1st September): £60

Your ticket includes the full-day conference, refreshments, and lunch.

If you haven't yet secured your place, we encourage you to book soon, to take advantage of the Early Bird offer, we'd love to see you there!



UPDATE FROM NATIONAL PARTNERS

SOCIAL MEDIA BAN

Last month, the Government announced plans to ban social media for under-16s. It is important that we remember that details are still emerging and any ban will not be enforced until Spring 2027, so whilst this is a major safeguarding shift, with clear implications for PSHE and education settings, we do not need to rush to change our curriculum. We wanted to share key information with you.

WHAT'S CHANGING?

The ban is likely to include platforms such as:

- Snapchat, TikTok, YouTube, Instagram, X

Not included: Messaging apps like WhatsApp

Other changes may include:

- No livestreaming for under-16s
- No contact with strangers
- New restrictions on AI chatbot content (under-18s)

WHAT DOES THIS MEAN IN PRACTICE?

Even with a ban, young people will still:

- Be online
- Use messaging apps
- Take risks

As we've shared previously, evidence shows that bans don't always remove risks; sometimes they shift them. This [article from SWGfL](#) shares their thoughts on what a social media ban could mean for schools.

WHAT DOES THIS MEAN FOR PSHE?

As outlined in this [blog by Reimagining RSE](#), the ban doesn't mean we don't need to talk about social media. Our focus in teaching should be less on rules; it is already encouraged not to talk about specific apps and platforms. What is most important is that we focus on developing skills:

- Digital Literacy and Critical Thinking
- Online behaviour and influence
- Risks across platforms, not just social media
- Emerging issues like AI and misinformation.

Teaching should be led by the experiences and lived reality of our children and young people. This is why Pupil Voice and engaging children and young people in our curriculum design are so critical. Staff should feel confident in creating safe spaces for discussions, using interactive and participatory activities and prioritising conversations over restrictions.

We know that PSHE is most effective when it is delivered in partnership with parents and carers.

To support them, we can:

- Share clear guidance on age limits and device use,
- Encourage consistent messages at home
- Share information in the [Parent/Carer section](#) of the PSHE Digest
- Share links found on the [Parent/Carer page](#) of our website.

Our role is to help children and young people to stay safe, think critically and navigate their digital world.

Find out more about the proposed ban [from this Factsheet](#) developed by the Government.



INCREASE IN SCHOOLS SUSPENSIONS FOR DISCRIMINATION

A new [BBC report on school exclusion](#) data highlights a rise in anti-LGBTQ+ and disablist bullying across UK schools. Between 2020/21 and 2024/25, there were over 13,000 exclusions or suspensions linked to bullying based on sexual orientation or gender identity, and more than 1,600 for disability-related abuse, an increase of 68% in under four years.

The findings suggest that reductions in funding to outreach services, social media harms, divisive politics and a lack of mandatory teacher training were among issues contributing to a growing problem.

Without consistent preventative education, children and young people may be less likely to understand the impact of discriminatory behaviour, while schools may rely more on reactive responses such as exclusion.

This reinforces the importance of high-quality PSHE as a preventative tool. Effective PSHE helps children and young people explore equality, respect and protected characteristics, supporting them to challenge prejudice and build positive relationships.

The report underlines that investment in preventative education is essential. Embedding anti-bullying themes within a whole-school PSHE approach can reduce harmful behaviour, improve school climate and minimise the need for exclusion.

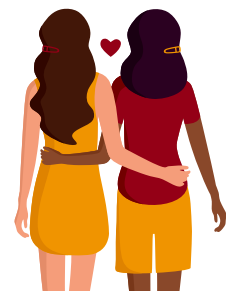
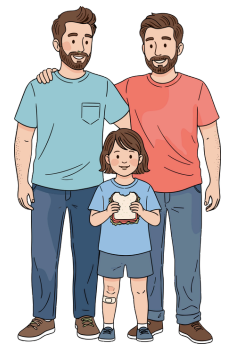
Education settings may wish to reflect on how well inclusion and anti-bullying are embedded in their curriculum, how confident pupils feel reporting concerns, and how staff are supported to address sensitive issues.

The Anti-Bullying Alliance has launched new guidance, [Preventing and Responding to Racist Bullying: Practical guidance for schools and settings supporting children and young people](#). This has been developed in response to the lived experiences of children, young people and school staff.

Our [Resource Library](#) contains resources around Bullying and Similarities and Differences, including our locally produced spiral curriculum on Hate Crime, developed with [subject experts from USAH](#).

We also have our training package - Empowering Educators to Respond to Casual Racism that you can commission the PSHE Education Service to deliver in your setting. [Contact the Service to make enquiries](#).

If you know of a child, young person or family who has been affected by discrimination, bullying, hate incidents or hate crime, [Uniting Staffordshire Against Hate \(USAH\)](#) can provide help and support.



MENTAL HEALTH SUPPORT TEAMS

Recent national data highlights the continued expansion of Mental Health Support Teams (MHSTs) in schools across England. These teams provide early support for pupils, help staff promote wellbeing, and improve access to specialist services

- Around 6 million pupils can now access support
- MHSTs are working in nearly 11,800 schools and colleges (48%)- 254 local settings (50% Pan-Staffordshire, 47% Midlands)
- 78% of secondary schools now have access - this is 77% in Staffordshire and 56% in Stoke-on-Trent, 60% across the Midlands.

The impact is clear:

- 9 in 10 schools report improved student wellbeing
- 7 in 10 report better attendance
- 8 in 10 report improved understanding of how to access external mental health support for pupils
- Nearly 8 in 10 report their MHST was effective in relation to curriculum teaching and learning to promote resilience and support social-emotional learning

These findings reinforce the importance of early support and a whole-school approach to mental health. In PSHE, we continue to help children and young people build resilience, understand their emotions, and know where to go for help.

By 2029, all education settings in Staffordshire and Stoke-on-Trent will be supported by MHSTs. You can see if your setting is already allocated an MHST by checking the following websites:

NHS Combined - For settings that are based in Stoke-on-Trent, Newcastle and Staffordshire Moorlands

NHS MPFT - For settings that are based in East Staffordshire, Stafford, Cannock, Lichfield, Tamworth, South Staffordshire

For settings that do not currently have access to MHST, the local authorities have commissioned Stay Well to provide Emotional Health and Wellbeing support. This means that every local education setting can access specialist support for children and young people, including universal workshops and training.

ENRICHMENT ACTIVITIES

The government has announced a new initiative to ensure all children have access to enriching activities that help build skills, confidence and connections beyond the classroom.

The government has announced a new initiative to ensure all children have access to enriching activities that help build skills, confidence and connections beyond the classroom. They have produced an enrichment framework for schools and colleges.

These activities help build confidence, well-being, and life skills, supporting students both in school and beyond.

In our Update on National Resources section, you'll find guidelines for accessing and raising awareness of the importance of a cultural entitlement for all children and young people, particularly our most vulnerable and disadvantaged, in the I'm Here - I Want to Belong.

In PSHE, we encourage children and young people to get involved in activities beyond lessons, helping them develop resilience, discover their interests and build important social skills. This national initiative highlights the vital role enrichment plays in supporting both personal development and well-being.



DIET AND NUTRITION

A recent [Food Foundation briefing \(2026\)](#) highlights growing concerns about children's diets and access to healthy food in the UK. It shows that eating well is becoming harder for many families, particularly due to rising costs and limited access to nutritious options. One key finding is that healthy food is often more expensive than less healthy alternatives, making it difficult for families to afford balanced diets. In fact, the lowest-income households would need to spend a very large proportion of their disposable income (85%) to meet healthy eating recommendations.

The report also highlights worrying trends in children's health, including:

- High levels of childhood obesity and tooth decay
- Limited access to affordable, nutritious food
- Low levels of fruit and vegetable consumption, partly influenced by advertising and availability

These issues are closely linked to well-being. Poor diet can affect energy levels, concentration, physical health and mental wellbeing, all of which play an important role in learning and school life.

PSHE can help children and young people to recognise:

- What a balanced diet looks like
- How food choices affect both physical and mental health
- The wider factors (such as cost and availability) that influence diet

By building knowledge and healthy habits early, we aim to support young people to make informed choices and develop a positive relationship with food. In Staffordshire, the County Council want to hear the voices of children and young people. See [local updates](#) for more information.



MENB VACCINE

This summer, a [time-limited MenB vaccination programme](#) is being offered to Year 13 students and young people under 25 who are starting university or moving into residential further education for the first time in autumn 2026.

The offer has been introduced [following recent meningitis outbreaks](#), while national experts review longer-term vaccination guidance.

Students will need two doses of the MenB vaccine for full protection:

- The first dose will be available from late July
- The second dose will follow in August
-

[Eligible](#) Year 13 students will be contacted by the NHS with details on how to book a vaccination appointment at a local pharmacy. Those moving to university or residential college can also access the vaccine through participating pharmacies, including walk-in options. This is an important step in protecting young people

SEXUAL HEALTH UPDATE

[ChatHRP](#) is a new AI-assisted tool that answers questions about sexual and reproductive health and rights using verified WHO research and guidance. This means there is no misinformation, no opinions, just facts.

When the Crime and Policing Bill received Royal Assent on 29th April 2026 it removed women from criminal law relating to abortion in England and Wales.

This means that women will no longer face criminal charges or prosecution for ending their own pregnancies.

Women with previous conviction under previous abortion laws will automatically receive historic pardons.



HPV VACCINE SUCCESS



Recent news reports highlight the significant long-term impact of school-based vaccination programmes, revealing that cervical cancer deaths have dropped dramatically among young women who received the HPV vaccine.

The study found that cases and deaths from cervical cancer have fallen to extremely low levels in those who were offered the vaccine as teenagers.

The latest data shows vaccination rates across the country have fallen below recommended levels. Data from the UK Health Security Agency shows that 76% of girls in England were vaccinated by the age of 15 in 2024-25, well below the 90% that the World Health Organisation (WHO) says is needed to eliminate cervical cancer.

This highlights the importance of not only offering the vaccine but also providing education to young people about its importance. Through learning about:

- Vaccinations and disease prevention
- Informed consent and personal health choices
- Accessing reliable health information

Young people are better equipped to understand the importance of preventative healthcare and lifelong wellbeing.

Our Resource Library hosts a quality-assured resource from the University of Bristol about the HPV vaccine.

NEW CHILD CRIMINAL EXPLOITATION LAWS

New legislation on child criminal exploitation (CCE) came into force on 29 June 2026 through the Crime and Policing Act.

The measures aim to strengthen action against those who exploit children and reinforce the principle that exploited children are victims, not offenders.

The Government has committed funding to tackle county lines and improve safeguarding, alongside new guidance and training to support professionals in identifying and responding to exploitation.

This blog by The Children's Society helps to explain what the new law means.



UPDATE TO MAKE RSE MANDATORY POST 16

Alistair Strathern, Labour MP for Hitchin, is launching a Private Members Bill (PMB), dedicated to extending RSE into Further Education. He is 1 of 20 MPs who have been selected in the Private Members Bill ballot and is Chair of the Labour group for men and boys

Here's the press notice issued by End Violence against Women Coalition, which includes quotes from Faustine Petron, the founder of the Make it Mandatory campaign, and Lucy Emmerson from Sex Education Forum.

MOBILE PHONE BAN IN SCHOOLS



The DfE's guidance on mobile phones in schools became statutory on 29th June, with schools expected to implement it from 1 September 2026.

The guidance references RSHE, stating that pupils should be taught about the risks associated with mobile phone use, both in school and beyond, including reduced focus, classroom disruption and increased bullying. This helps children and young people understand the rationale behind restrictions during the school day.

It also highlights the importance of teaching the benefits of phone-free environments, encouraging pupils to value them and build a positive school culture.

Education settings may wish to cross-reference their PSHE and mobile phone policies to ensure a consistent message.



UPDATE FROM LOCAL PARTNERS



RIGHT HELP, RIGHT TIME DOCUMENT LAUNCH

From 1st July 2026, Staffordshire Safeguarding Children Partnership has introduced the updated Right Help, Right Time (RHRT) framework, providing a clear structure for how professionals identify need, offer support, and safeguard children.

The framework outlines a continuum of need, ensuring that children, young people and their families receive the right level of support at the earliest opportunity.

It is built around 4 levels:

- Everyone - Thriving (Universal Support) - This is where PSHE sits
- Early Support - Additional needs emerging
- Enhanced Support - Complex needs requiring coordinated response
- Statutory Intervention - Significant harm or risk of harm

Central to the model is a shared commitment to:

- Early intervention
- Child-centre practice
- Collaboration and information sharing
- Building resilience through strengths-based approaches

PSHE is not just aligned with RHRT; it is essential to its delivery. At level 1, most children and young people's needs are met through universal services such as education and youth provision.

High-quality PSHE play a leading role by:

- Promoting mental health and wellbeing
- Teaching healthy relationships and consent
- Developing digital resilience and online safety
- Encouraging positive decision-making and help-seeking behaviours

These elements build the protective factors that prevent issues from escalating.

RHRT stresses that all professionals must spot emerging needs early. PSHE lessons:

- Create safe spaces for discussion
- Enable pupil voice and disclosure
- Highlight early signs of concern

The framework promotes early conversations and restorative approaches. PSHE equips children and young people with:

- Language to express worries or concerns
- Confidence to seek support
- Understanding of risks and boundaries

As highlighted in the statutory RSHE guidance, PSHE is a key tool for safeguarding children and young people. It enables us to identify and make meaningful referrals to ensure the Right Help at the Right Time.

All staff should be aware of

The updated document, please share with colleagues in your setting.



SCHOOL FOOD SURVEY – PUPIL VOICE OPPORTUNITY



Staffordshire County Council are inviting all Staffordshire education settings to take part in a student food survey, aimed at specific year groups. They welcome feedback from your students about the food they eat at school/college and what it is like to eat there. A summary of key themes and insights from the survey results will be shared with school leaders. We hope this will be helpful evidence to demonstrate that pupils are being actively consulted on food provision, one element of adopting a whole-school approach to food, in line with Ofsted's focus on personal development, wellbeing, and creating a culture and ethos of healthy eating.

The surveys are accessible on Microsoft Forms, via the links below.

- For Years 2 and 4, we are asking class teaching staff to ask the questions and complete the survey as a class response.
- For the older year groups (Year 6, 8, 10 and 12/13) the survey should take about 5 minutes to complete.

No personal information is collected, and results are anonymous

This survey forms part of Staffordshire County Council's Better Health Staffordshire programme, a whole system approach to:

- Tackle the causes of excess weight, physical inactivity and poor diet
- Enable and empower individuals, families, and communities to move more, eat a healthy, balanced diet and maintain a healthy weight

The results will help us better understand the enablers and barriers to healthy eating within school/college settings, recognising the important role these environments play in shaping children and young people's behaviour, knowledge, and attitudes.

This is important because recent Staffordshire data (2024/25) shows that:

- 1 in 4 Reception children are living with excess weight.
- More than 1 in 10 live with obesity at Reception age.
- By Year 6, more than 1 in 3 live with excess weight, and nearly 1 in 4 children live with obesity.

To support engagement, schools and colleges that submit a response will be entered into a free prize draw to win an 18-piece gardening bundle worth over £280!

All surveys will close by 5 pm on 17th July 2026.

If you would like further information, please contact kate.sutcliffe@staffordshire.gov.uk

[Year 2 - School Food Survey](#)
[Year 4 - School Food Survey](#)
[Year 6 - School Food Survey](#)
[Year 8 - School Food Survey](#)
[Year 10 - School Food Survey](#)
[Sixth Form - School Food Survey](#)
[College Food Survey](#)

DEADLINE

17:00



ASTHMA FRIENDLY SCHOOLS

The Asthma Friendly Schools Programme brings together the NHS, education settings and local authorities to manage children and young people with asthma.

Through training, education settings can ensure children and young people with asthma are safe within an asthma-friendly environment. It will also:

- Increase confidence among staff in asthma management
- Improve the quality of life for children with asthma who attend the setting
- Reduces absences due to asthma
- Improve partnership working between education settings and the NHS

Find out more about the [Asthma Friendly Schools Programme](#)

To register for the local programme, please email asthmafriendlyschools@staffsstoke.icb.nhs.uk

[You could link this to #askaboutasthma week \(7-11 September\).](#)



READ TO THE BEAT! 2026 SUMMER READING CHALLENGE

The [Summer Reading Challenge](#) 2026, delivered in partnership with public libraries and powered by Universal Music Group UK, launches on 4th July. This year's theme, Read to the Beat!, celebrates the joy of music and the power it has to move, inspire, and connect us, all through the magic of reading.

Many of the books identified have PSHE themes, including stereotypes, goals and aspirations, self-confidence, identity, friendships and more.

Please promote to your children and young people. The website includes information on how schools can get involved, including making contact with your local library and running an assembly.



WILDFIRE RISKS

Staffordshire Fire and Rescue Service are reminding residents and visitors of the risk of wildfires following [several local incidents](#).

One small fire can quickly get out of hand and become a fast spreading grass fire, particularly during periods of hot, dry weather. These fires have a devastating impact on landscapes, wildlife and communities. They also put a strain on firefighters, who are often needed elsewhere.

They have provided [Grass Fire Prevention Tips](#) on their website.

LOCAL NEWSLETTERS

Here is a round-up of newsletters that have been shared across the Partnership:

- [Families Health and Wellbeing Service \(0-19\) Spring/Summer 2026.](#)



INFORMATION FOR PARENTS AND CARERS

This new section for the 2025-2026 academic year provides information that education settings may wish to share with their parents and carers via their usual communication methods, e.g. newsletter, ClassDoJo, class blogs etc... The aim is to improve transparency and engagement with parents and carers.

ONLINE SAFETY

SOCIAL MEDIA BAN

The UK government announced a social media ban for under-16s along with restrictions on other features. While we wait for more details and action, the need to support children on social media can't wait. [Internet Matters has created a practical guide](#), and [the Anti-Bullying Alliance have also produced practical guidance](#) to help your child stay safe on social media.

MINI WEBINARS FOR PARENTS AND CARERS

Supporting children online can be challenging as the digital world evolves.

These short [15-20 minute webinars from Childnet](#), supported by the Safeguarding Board for Northern Ireland, offer practical tips, conversation starters and guidance for parents, carers and professionals, covering topics from privacy settings and parental controls, group chats and peer pressure, online bullying, image sharing, harmful content and online grooming – covering everything from everyday online use to more serious risks.

ONLINE SAFETY RESOURCES FOR PARENTS AND CARERS OF CHILDREN AND YOUNG PEOPLE WITH SEND

Children with additional needs may experience the online world differently, sometimes spending more time online or feeling less in control.

[Every Child Safe Online](#) from Internet Matters offers practical guidance for parents and carers, with tailored support to help children stay safe and have positive online experiences.

ONLINE SAFETY FACTSHEETS FOR PARENTS AND CARERS

Children's online lives are evolving, with new risks emerging through AI, gaming and private apps – meaning safeguarding must look beyond content to how they interact and build relationships.

To help, ECP Safeguarding has created new fact sheets for parents and carers.

[Fortnite](#) and [Roblox](#).

AI GUIDANCE FOR PARENTS AND CARERS

[CEOP's guidance helps parents and carers understand how AI can be used, and misused, online](#), including risks such as manipulated or generated images of children. It offers practical advice on reducing risk, talking to children about consent, and knowing how to respond and seek support if concerns arise.



RESOURCES

Resources included in this section are either new updates, additions to the [Resource Library](#) or linked to key dates of awareness or observation that have relevance to PSHE. Find the full year calendar for [2026-2027 here](#). Please note that the linked document and image below take you to a live document, which we will continue to update throughout the year. To request a printable version please email natalie@staffscvys.org.uk

Using engagement analytics of the Resource Library on our website, we have identified the top topics that users are visiting to look for resources. This data will help us identify further resources, support and guidance on priority topics.

FOR JUNE:

WATER SAFETY

APPROPRIATE BEHAVIOURS

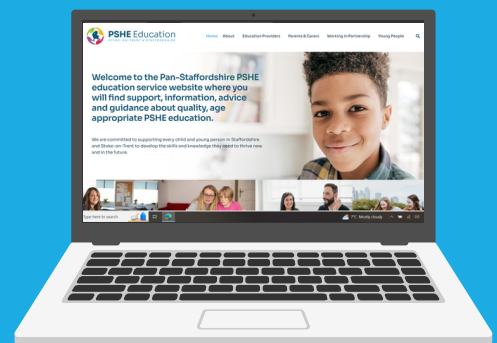
JOBS

ONLINE SAFETY

BODY IMAGE

EXTREMISM

GROOMING



We value ongoing feedback to help us shape the service and ensure that we respond to support needs. You are welcome to share any feedback, suggestions and thoughts by emailing natalie@staffscvys.org.uk.

NEW

NEW TO THE RESOURCE LIBRARY - WWW.PSHESTAFFS.COM

As part of supporting local education settings, we have been quality assuring and adding more new resources to the Resource Library on the website - [register](#) or [log in](#). This month we have added resources from:

Artificial intelligence is becoming part of everyday life. People use it to plan tasks, communicate at work and find information online. The Economist Education Foundation has created a lesson plan for 10-16-year-olds that helps young people explore how people use AI in everyday life, consider the risks and benefits of AI-generated information and explore how to use AI responsibly and think critically about its answers.

The
Economist

EDUCATIONAL
FOUNDATION

Added to the Media and Online Safety pages of the [Resource Library](#).



UPDATE ON NATIONAL RESOURCES



HELP SHAPE MENTAL HEALTH SUPPORT IN SECONDARY SCHOOLS

Anna Freud, the Education Endowment Foundation, and partners, including Place2Be, are seeking secondary schools to take part in a randomised controlled trial (RCT) evaluating the Learning Together for Mental Health programme.

This whole-school approach aims to improve student wellbeing, belonging, engagement, and behaviour, while also supporting academic outcomes. It includes staff training, student wellbeing surveys, and facilitated action groups to strengthen school culture.

Schools will be randomly assigned to either take part in the programme or continue with usual practice; both groups are vital to the research. All participating schools will receive £1,000 to support their involvement.

This is a great opportunity to contribute to national research, strengthen your approach to mental health, and help shape future best practice.

PSHE ASSOCIATION'S SEND FRAMEWORK

The updated 2026 version of the PSHE Association's PSHE education Planning Framework for pupils with SEND is now available as a free download.

Widely used by our local education setting, which helped achieve over 50,000 downloads of the 2020 version, it remains a key resource for planning and adapting PSHE in both specialist and mainstream settings. The new edition reflects changes in young people's lives and aligns with updated RSHE statutory guidance from September.

The latest 2026 version continues this legacy, while also keeping pace with the ever-changing landscape of children and young people's lives and needs, and updated RSHE statutory guidance in force from September.

The new Framework accompanies the 2026 edition of their Programme of Study and supports a comprehensive, inclusive PSHE curriculum. It includes progressive learning across seven stages, from 'Encountering' to 'Enhancement', allowing children and young people to access content at a level appropriate to their needs.

Schools can download the Framework for free to help ensure all pupils are equipped with the knowledge and skills to navigate life's challenges and opportunities.

[Read this blog](#) for more details about the changes to this update.



TALK RELATIONSHIPS WEBINAR FROM NSPCC

NSPCC Learning has designed a new, free on-demand school leaders' webinar from the NSPCC's Talk Relationships service. The hour-long webinar covers: what a whole-school approach is; creating a culture of safety and respect in schools; and what's new in Talk Relationships. The Talk Relationships e-learning course for teachers has also been updated. The training covers everything teachers need to confidently prepare and deliver sex and relationships education.

This course has been added to our [Training Page of the website](#) under Whole School Approach to Healthy Relationships.

INCLUDE ME - I WANT TO BELONG

Include Me - I Want to Belong is a document that provides guidelines for accessing, and raises awareness of the importance of, a cultural entitlement for ALL children and young people, particularly our most vulnerable and disadvantaged.

This work by the Midlands Arts Partnership draws on over ten years of research, collaboration, and lived experience from care-experienced young people and professionals across education, social care, and the arts.

Evidence shows that arts engagement improves mental health, confidence, motivation, school participation, and social connections. Trauma-informed programmes provide safe spaces to explore identity, build trust, and develop life skills, while also strengthening carers' professional practice and wider collaboration.

NEW PSHE BOOK ON TEACHING PHYSICAL HEALTH

The latest edition of the PSHE Toolkit series, provides clear, up-to-date guidance on key health topics, with a focus on the developing teenage brain to support informed decision-making.

It includes a wide range of lesson resources, activities and teacher guidance, designed to be practical, engaging and easy to deliver with minimal preparation.

NEW PORNOGRAPHY LESSON FROM BROOK EDUCATION TEAM

For many young people, first exposure to pornography is unplanned, with the average age around 13, and often happens without context. Over half say they have learned little or nothing about it, and report that lessons can feel overly simplistic.

Brook has worked with young people aged 16-19 to create a more balanced lesson that encourages critical thinking, recognises different experiences, and provides a safe space for open discussion, supported by expert facilitation.

Our guidance document on Using External Providers can help you with the quality assurance process. You can find this is with other [Guidance Documents on our website](#).

DOG, DUCK AND CAT NEWSLETTER

The Dog, Duck and Cat Trust Summer Newsletter has been published, including details of new developments and feedback. This is suitable for first and primary education settings.



COM NETWORKS

This [shareable resource](#) from INEQE can be displayed in education settings, sent home, or used to support discussions about [Com Networks](#)—harmful online communities that build false friendships with young people before pressuring them into risky or dangerous actions.

It explains what Com Networks are, highlights key warning signs, and provides advice on how to leave safely and access support.



BOYS EDUCATION COMMISSION

A new Boys' Education Commission, led by Peter Hyman, is [inviting schools, professionals and young people to share their views](#) on the challenges facing boys today

The inquiry aims to understand issues such as wellbeing, identity and underachievement, and gather ideas for practical solutions.

This is an opportunity to contribute insight and experience to help shape future support for boys' education and development. Closes 14.9.26

CEOP SUMMER HANDOUT FOR YOUNG PEOPLE



Safeguarding concerns can spike over the summer holidays – remind young people where to get help and report online sexual abuse.

This one-page resource from CEOP directs young people to online services where they can seek help and report concerns relating to online sexual abuse

- [Under 18s help and report poster](#)
- [11-18s poster](#)

CEOP GUIDANCE FOR PROFESSIONALS

CEOP has updated its [AI-Child Sexual Abuse Material guidance for professionals](#), strengthening safeguarding advice, including enhanced guidance on image consent and protecting organisational images from AI misuse.

It introduces a new parent resource and encourages settings to use it to reinforce key online safety messages at home (see [Parent/Carer Update](#)).

NATIONAL EDUCATION NATURE PARK

Funding for the 2026-2027 academic year is available for eligible settings to receive up to £5,000.

The Royal Horticultural Society will contact eligible settings during the summer term with application information. You can find a list of these settings in the [National Education Nature Park: 2026 to 2027 academic year eligible educational settings](#).

The grant can be used to add biodiversity and enable its monitoring or measurement.

DSM FOUNDATION DELIVERY BOOKLET

DSM have produced their [Drugs Education delivery booklet](#) for the 2026-2027 academic year. This contains details of their provision for schools and colleges, from workshops for students, webinars for parents and caregivers, and training for teachers and other professionals, to live and filmed performances of 'I Love You, Mum – I Promise I Won't Die' accompanied by resources that enable those who have seen Dan's story told in the words of his family and friends to discuss its themes and messages and take away tangible staying safe strategies. Please note there are costs associated with these resources, and education settings need to carry out their own quality assurance process as they do for all external providers.

A number of their resources for education settings can be found in our [Resource Library](#).



UPCOMING KEY AWARENESS DATES - SEPTEMBER

CHILDHOOD CANCER AWARENESS MONTH (1-30)

It can be really difficult to spot the symptoms of childhood cancer. In the UK, there's much less awareness of the signs of childhood cancer versus adult cancers, and many of the symptoms of childhood cancer are also symptoms of common illnesses.

The CCLG provide an [information page](#) on their website around the Signs and Symptoms of Childhood Cancer. We have written a professional's guidance pack [Self-Examination and Screening & PSHE](#) which provides information to develop subject knowledge, provides links to curriculum and key information related to this topic.

SNACKTEMBER (1-30)

Snack-tember is a free, month-long health initiative from the British Nutrition Foundation, focused around helping children and young people (aged 5-16 years) make and choose healthier, more sustainable snacks.

A range of exciting resources are available, include recipes, posters, classroom activity ideas and assembly slides, to help children and young people:



- Explore better snacking
- Try new snacks
- Make their own healthy snacks

[Register for more information here.](#)

ZERO WASTE WEEK (7-11)

Exploring Zero Waste Week in PSHE helps children and young people understand environmental responsibility in engaging ways. Lessons on waste, landfills, oceans, and climate change introduce the 3 Rs: Reduce, Reuse, Recycle. Activities like audits, upcycling, and campaigns encourage action, while discussions on eco-anxiety and fairness build empathy. It inspires practical choices to protect the planet.

Resources to support with learning about waste and its impact can be found in the Resource Library in *The Environment* section. [Register here.](#)

#ASKABOUTASTHMA (7-11)

#AskAboutAsthma Day is a UK awareness campaign held each September to encourage people with asthma, especially children, to get an annual asthma review before school starts. It promotes better understanding of symptoms, proper inhaler use, and having an up-to-date action plan to help prevent asthma attacks and keep people safe and active.

Moggy's New Medicine - a storybook from the Dog, Duck & Cat Trust, enables children (ages 7-9) to learn more about Asthma and can be found in the Medicine Management section of the [Resource Library](#).



WORLD SUICIDE PREVENTION DAY (10)

World Suicide Prevention Day offers a meaningful opportunity to promote mental health awareness within PSHE. Lessons can explore emotional literacy, challenge stigma, and empower children and young people to seek help and support others with empathy and compassion.

Through practical strategies like coping tools and signposting to services such as Childline, children and young people can build resilience and confidence.

Check out the [Parents/Carers page](#) on our website, which lists support services and further information on topics covered by the PSHE curriculum.

Resources to support you can be found in the *Mental Health* page of the Resource Library. Click to [register](#) or [log in](#).

A reminder that the Staffordshire and Stoke-on-Trent Integrated Care System (ICS) has developed a [suite of guidance and resources to support headteachers, principals, designated safeguarding leads, and other education professionals](#), which has previously been shared. The guidance outlines the immediate actions that should be taken following a suspected suicide involving a child or young person, as well as providing advice on ongoing support, communication, and managing the wider impact on the school or college community. It also links to the more recent guidance on resources to support suicide prevention in education.

WORLD FIRST AID DAY (12)

World First Aid Day highlights simple life-saving actions, from treating minor injuries to calling for help in emergencies, while building confidence and responsibility.

St John Ambulance notes that in a heart attack, every minute without first aid can reduce survival chances by up to 10%, showing how vital these skills are.

Resources to support can be found in the First Aid section of the [Resource Library](#) and include:

- Elastoplast Kids First Aid Programme (ages 5-7)
- British Red Cross First Aid Champions online teaching platform (ages 5-18)



WORLD SEPSIS DAY (13)

World Sepsis Day, raises awareness about sepsis – a life-threatening condition caused by the body's extreme response to infection.

In PSHE, it's a chance to teach young people how to recognise early signs (like confusion, rapid breathing, or mottled skin), understand the importance of seeking urgent help, and learn how infections can escalate.

The [UK Sepsis Trust's "Sepsis Savvy Schools"](#) PSHE resources, have been designed for all Key Stages, to equip teachers and students with essential knowledge about the dangers of sepsis.



SEXUAL HEALTH WEEK (14-20)

Sexual Health Week in the UK highlights the importance of open conversations, education, and access to services to improve wellbeing and prevent illness. Good sexual health supports overall physical and mental health, while reducing stigma and encouraging safer choices.

Recent data shows why it matters:

- Around 334,000 new STI diagnoses were recorded in England in 2025
- Young people aged 15-24 are most affected, with higher diagnosis rates than other groups

Sexual Health Week raises awareness, promotes testing and prevention, and helps ensure people have the knowledge and confidence to make safe, informed choices.

Open Clinic provides Sexual Health Clinics across Stoke-on-Trent and Staffordshire. Details of their services, opening times, locations and appointment system can be found on their [website](#).

Resources to support learning about Sexual Health can be found in the Resource Library. Click to [register](#) or [log in](#).

JEANS FOR GENES WEEK (14-20)

Jeans for Genes Day is an awareness event that raises funds and understanding for children with genetic conditions.

In PSHE, it's a chance for young people to learn what genes are, how genetic disorders affect daily life, and why inclusion and empathy matter. Activities like designing denim, watching real-life stories, and exploring how our genes shape who we are help students celebrate difference and support others.

Resources from [Jeans for Genes](#) offer engaging, age-appropriate materials for lessons and assemblies.



ORCHID MALE CANCER AWARENESS WEEK (14-20)

Orchid Male Cancer Awareness Week raises awareness of prostate, testicular, and penile cancers, encouraging early detection and open conversations about men's health. It plays an important role in reducing stigma and helping people access support.

In the UK, the need is clear:

- Over 57,000 men are diagnosed with prostate cancer each year, making it the most common male cancer
- Around 12,000 men die from it annually
- Overall, male cancers affect tens of thousands of men every year

In PSHE, this week provides a valuable opportunity to teach young people about risk factors, symptoms, and the importance of self-examination and seeking help. Using [Orchid resources](#), students can build confidence, empathy, and health literacy while breaking down stigma around male health.



TRAVEL WISE WEEK (16-22)

TravelWise Week is a great opportunity for education settings to encourage healthier, safer and more sustainable travel. By promoting walking, wheeling, cycling and public transport, education settings can help reduce traffic and air pollution around their vicinity while increasing children and young people's daily physical activity and supporting their health and wellbeing.

TravelWise Week also complements a whole-school approach to sustainability, health and active travel, embedding positive travel habits into everyday school life. Education settings are encouraged to sign up to Modeshift STARS Education, the national schools travel plan accreditation scheme.

Many settings are already successfully engaged with the programme, using it to recognise and build on their active travel achievements while accessing resources and support to make sustainable travel a lasting part of school culture.

NATIONAL FITNESS DAY (18)

National Fitness Day celebrates the power of physical activity to boost health, happiness, and community spirit.

Through cross-curricular links between PE and PSHE, it's a great opportunity to help children and young people explore how movement supports both physical and mental wellbeing.

Resources to support can be found in the *Physical Activity* section of the Resource Library and include:

- The Shake Up toolkit from Public Health England, which uses Disney Pixar and Marvel-inspired activities, is designed to be fun and flexible, so they can be used at different times throughout the school day (ages 5-11)
- Programme of three sessions (60 minutes each) from Dove and Nike aimed at building body confidence through sports (ages 11-17)

UK SAVINGS WEEK (21-27)

UK Savings Week promotes good money habits like saving and planning for the future.

In PSHE, it supports financial education by teaching budgeting, goal-setting, and smart decision-making. These skills help students become more confident, independent, and responsible with money.

Resources to support can be found in the *Budgeting* section of the Resource Library and include:

- Financial Literacy resources from Beano and The Bank of England including presentations, activities and games and home learning activities (ages 5-11)
- Resources from Natwest, Barclays and Santander banks which cover financial literacy, budgeting, saving and money skills (ages 5-18)



ORGAN DONATION WEEK (21-27)

Over 8000 people are currently in need of a transplant to save or improve their lives.

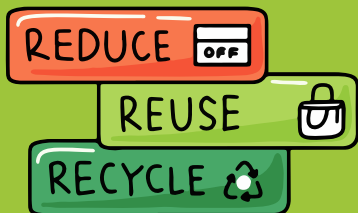
The annual Organ Donation campaign, led by NHS Blood and Transplant, encourages people to confirm their decision on the NHS Organ Donor Register and emphasises the vital importance of discussing organ donation wishes with family members.

Resources to support can be found in the *Organ, Blood and Stem Cell Donation* section of the [Resource Library](#) and include:

- Free curriculum-linked resources from Team Margot, NHS Blood & Transplant (NHSBT) including some assured by the PSHE Association, that help to teach children about giving to help others, and blood, stem cell and organ donation (ages 5-11)
- Free, curriculum-linked resources that educate 11-16 year olds about blood, organ and stem cell donation. Developed in collaboration with Anthony Nolan.

RECYCLE WEEK (21-27)

- The UK recycles around 44.6% of household waste [gov.uk]
- About 89% of people say they regularly recycle, showing strong engagement [wrap.ngo]
- However, 79% of households still throw away recyclable items, with around 2.3 billion recyclables binned each year



Covering the Environment and Recycling in PSHE helps to tackle this gap by improving understanding and encouraging better habits, supporting a more sustainable future.

Resources to support teaching and learning on this topic can be found in the [Resource Library](#) under The Environment.

INTERNATIONAL DAY OF PEACE (21)

As the new academic year begins, changing friendship groups and class dynamics can shape how students interact. This creates a valuable opportunity to promote positive relationships and inclusion by exploring the PSHE theme of Similarities and Differences.

You'll find helpful resources on this topic available on our [website](#).

You might also wish to explore Mindfulness as a way to support children and young people in developing calming routines, self-regulation strategies, and breathing techniques. Resources on mindfulness are also available in the Resource Library. Click to [register](#) or [log in](#).



TRAINING OPPORTUNITIES

Whilst we always try and source resources and training at no cost, we recognise that some organisations do have a small budget to support their PSHE delivery. Here are some upcoming training opportunities available both for free and a cost, locally and nationally. Click on links for bookings and further information.

Reminder

It is important to us that we signpost to any training opportunities that may enhance your CPD offer in your settings.

In addition to the PSHE Education Service webinars and our PSHE Leads Network Meetings, detailed on Page 1, which can be booked, for free through Eventbrite, we signpost to wider training opportunities.

We signpost to training from reputable sources, nationally and locally, however, are not responsible for the content. If you have any feedback to share regarding training which you attend, please feel welcome to share with us - natalie@staffscvys.org.uk.

TRAINING

TOPIC	DATE/TIME	ORGANISATION	COST	OVERVIEW
DOMESTIC ABUSE	VARIOUS	NEW ERA	FREE	FREE DOMESTIC ABUSE AWARENESS AND TRAINING SESSIONS FROM THE COMMISSIONED SUPPORT PROVIDER FOR STAFFORDSHIRE AND STOKE-ON-TRENT.
GAMBLING	VARIOUS	YGAM	FREE	THIS 90 MINUTE INTRODUCTORY WORKSHOP IS PART 1 OF 2 OF OUR FULLY FUNDED CITY & GUILDS ASSURED TRAINING AND IS OPEN TO TEACHERS, YOUTH WORKERS AND FORWARD-FACING PROFESSIONALS WHO WORK DIRECTLY WITH CHILDREN AND YOUNG PEOPLE AND ARE ABLE TO DELIVER SESSIONS TO THEM ABOUT GAMING AND GAMBLING HARM.
SEXUAL ABUSE	VARIOUS	CEOP	£150	A ONE DAY ONLINE COURSE FOR PROFESSIONALS TO GAIN AN UNDERSTANDING OF ONLINE SEXUAL ABUSE. ENABLES PARTICIPANTS TO IDENTIFY KEY STRATEGIES TO ENSURE ONLINE CHILD SEXUAL ABUSE IS INCLUDED AS PART OF A WHOLE-ORGANISATION APPROACH TO SAFEGUARDING AND PROTECTING CHILDREN AND YOUNG PEOPLE
ONLINE SAFETY	VARIOUS	CEOP	£150	PROFESSIONALS MUST ATTEND UNDERSTANDING ONLINE CHILD SEXUAL ABUSE TRAINING (ABOVE) FIRST. THIS TRAINING ENABLES PARTICIPANTS TO BECOME LEADS FOR TRAINING AND INFORMATION RELATING TO ONLINE CHILD SEXUAL ABUSE



TOPIC	DATE/TIME	ORGANISATION	COST	OVERVIEW
FINANCIAL LITERACY	VARIOUS	<u>YOUNG ENTERPRISE</u>	FREE	FREE CPD ACCREDITED SESSIONS FOR PRIMARY, SECONDARY AND SEND, FIND OUT ABOUT THE SUPPORT AVAILABLE AND GET THE CONFIDENCE TO DELIVER HIGH QUALITY FINANCIAL EDUCATION.
GENDER / CONSENT	VARIOUS 3.45-5.15PM	<u>EVERYONE'S INVITED</u>	FREE	AN EMPOWERING AND INTERACTIVE SESSION DESIGNED TO EQUIP EDUCATORS WITH THE KNOWLEDGE AND CONFIDENCE TO RECOGNISE, RESPOND TO, AND DISMANTLE RAPE CULTURE WITHIN THEIR COMMUNITIES.
THE LAW	8 TH JULY 10-11.30AM	<u>FEARLESS</u>	FREE	COVER AN INTRO TO FEARLESS, EXPLORE GIVING INFORMATION ABOUT CRIME 100% ANONYMOUSLY, SNITCHING AND THE BYSTANDER APPROACH.
ANTI-BULLYING	20 TH NOVEMBER 9AM-12PM	<u>ANTI-BULLING ALLIANCE</u>	£98.20	<p>THIS CPD TRAINING WILL HELP DEVELOP YOUR UNDERSTANDING OF BULLYING AND THOSE MOST AT RISK OF EXPERIENCING BULLYING: AND IMPROVE CONFIDENCE IN PREVENTING AND RESPONDING TO BULLYING.</p> <p>THIS TRAINING IS AIMED AT PRACTITIONERS AND PROFESSIONALS FROM SCHOOLS AND WIDER CHILDREN'S WORKFORCE SETTINGS, SUCH AS SOCIAL WORKERS, HEALTHCARE PROFESSIONALS, YOUTH OFFENDING TEAMS, EARLY YEARS PROVIDERS, POST-16 PROVIDERS, YOUTH WORKERS, SCHOOL GOVERNORS, INFORMATION, ADVICE AND SUPPORT WORKERS.</p>



STAFFORDSHIRE SAFEGUARDING CHILDREN PARTNERSHIP UPCOMING TRAINING

Please remember to check out the [Staffordshire Safeguarding Children Partnership website](#), which advertises various training events to help improve knowledge of various safeguarding topics and themes.

We have highlighted some upcoming sessions we think those delivering PSHE may find helpful:

- [Free Lunch and Learn: Hidden Online Harm: an introduction to COM offending](#)

This awareness session will explore the different areas of COM offending, what they look like and typical words, symbols associated with these crime types - 18.09.26 12-1 pm MS Teams

- [Level 3 Child Sexual Abuse in the Family Environment Multi-agency Training](#)

Update for the Level 2 certificate

Victim/Survivor lead - Increase participants' awareness of and response to protecting children who are both at risk of or currently experiencing Intra-familial child sexual abuse. 17.09.26 9.30 am-4.30 pm Zoom

- [Level 3 E Safety and Dark Net, including the Perpetrator Multi-agency Training](#)

Update for the Level 2 certificate

Awareness of the risk factors associated with internet use, mobile phones and the Darknet. Understand the types of technologies which are harm and abuse children. Understanding of technological communications. Definition of the Dark Web, Deep Web and Open Web. How the Dark Web can be accessed. Reasons why a young person might access the Dark Web and what to do. Awareness of behaviours used by perpetrators to target, groom and abuse. Awareness of safety and educational strategies to minimise risk. Understand how children can protect themselves. Understand when to make a referral and to whom. 15.09.26 9.30 am-12.30 pm MS Teams

- [Free Lunch and Learn: Sexual Assault Referral Centre \(SARC\)](#)

This awareness session will share the referral pathways, explain the difference between Child Protection and Child Sexual Assault medicals, and teach more about the examinations. 06.10.26 12-pm MS Teams

There is a link to their training page [via our website](#), and we encourage colleagues to check regularly for opportunities to support their CPD plans.

STAFFORDSHIRE VIRTUAL SCHOOL TRAINING OFFER FOR 26-27

The Staffordshire Virtual School is pleased to share its Early Bird [Virtual School training offer](#) for the next academic year. They have training available for Designated Teachers and the wider team. Professionals can book as many courses as are relevant. There is no charge for the training; there are charges for failure to cancel or non-attendance.

We would encourage colleagues to particularly explore the Relational and Restorative Practice training as part of the whole-school approach your PSHE curriculum sits within.



TRAINING (E-LEARNING, WEBINARS)

Please check out the training page on our website - <https://pshestaffs.com/training/>.

- None added this month

PODCASTS

You can find podcasts to support CPD on our website - <https://pshestaffs.com/podcasts/>. This can also be found in the drop-down menu for Education Providers under the training sub-menu.

This month, we have added:

- MPFT - Protecting your Child Through Vaccination - Join Health Visitors Stacey and Carol as they talk about protecting your child through vaccination. Vaccinations protect children from serious illnesses like measles, meningitis, polio, whooping cough and more. Discover how this works, why the national schedule might change, common myths, managing potential side effects and more. Using NHS and UK Health Security Agency (UKHSA) guidelines to provide current advice, they consider the most commonly asked questions about vaccination. This has been added to Vaccinations and also our Parents/Carer page
- MPFT - Teenagers and Vaping - Caroline is joined by Paul from Everyone Health Staffordshire to explore the growing issue of vaping among teenagers. They share the facts, challenge common myths, offer practical advice on starting supportive conversations, and explain what parents, carers, schools and professionals need to know to help young people make safer choices. This has been added to Smoking/Vaping and our Parent/Carer page.
- Runnymede Trust - Unpacked: Young People and Violence is a 5-part podcast series that challenging us to think differently. Presented by Richie Brave and featuring a range of expert voices, this series encourages us to flip the narrative to question who gets forgotten, and how we can really keep young people safe.

DOCUMENTARIES AND DRAMAS

We have collated documentaries and dramas that will support the CPD of professionals. We do not encourage or endorse these to be shown to children and young people within PSHE sessions. They are located at <https://pshestaffs.com/documentaries-and-dramas/>. This option can also be found in the drop-down menu for Education Providers, located under the Training sub-menu.

- OnlyFans: Inside the Machine - Amber Haque reveals how OnlyFans models suffer widespread exploitation and coercion at the hands of their managers. Added to Exploitation
- Gareth Southgate: Changing the Game for Young Men - Former England men's football manager Gareth Southgate reveals the struggles many boys and young men face, asking why some feel left behind and what could help them move forward. Added to Gender.
- Georgia Harrison: Porn. Power. Profit - Georgia Harrison uncovers the terrifying truth behind online intimate image abuse in the porn industry - including who profits from it and what can be done to stop it. 2 episodes, the first explores Revenge Porn and the second explores Deepfake porn sites and Nudifying apps. Added to Pornography
- Revenge Porn: Georgia vs Bear - Revealing doc about how reality star Georgia Harrison fought a revenge porn court case against her ex, Stephen Bear and won. Added to Pornography



NEXT EDITION (SEPTEMBER)...

Resources & Materials for key awareness dates in October:

- Black History Month (1-31)
- Breast Cancer Awareness Month (1-31)
- ADHD Awareness Month (1-31)
- Cyber Security Awareness Month (1-31)
- Cycle to School Week (5-9)
- Baby Loss Awareness Week (9-15)
- Hate Crime Awareness Week (10-17)
- World Mental Health Day (10)
- International Day of the Girl Child (11)
- Global Handwashing Day (15)
- World Food Day (16)
- Restart a Heart Day (24)
- UN Day (24)

WANT TO SHARE A
RESOURCE, IDEA OR
INFORMATION ABOUT YOUR
SERVICE?
LET ME KNOW AND I CAN
INCLUDE IN UPCOMING
EDITIONS

Join our Facebook Group and join fellow PSHE Leads to share best practice, resources and be kept updated in between Digests



“ Thank you very much for putting together the PSHE policy template. This helped me enormously when writing our new policy, and by incorporating all of the questions in blue, it made it very personal to our school, but at the same time, knowing it is compliant with all of the statutory changes ahead. ”

PSHE Lead, First School, Stafford

If you would like to share any feedback or request specific support, advice or guidance, please contact us directly:

natalie@staffscvys.org.uk

Next edition publication date: 4th September 2026

Please note we don't send an edition of the PSHE Newsletter in August



PSHE Education
STOKE-ON-TRENT & STAFFORDSHIRE

Part of:

SCVYS
STAFFORDSHIRE COUNCIL OF VOLUNTARY YOUTH SERVICES

Funded by:

