



## COVERED IN THIS MONTH'S NEWSLETTER:

- PSHE & Prevent Training
- Opportunity for Children and Young People to share their experiences with the Children's Commissioner about their summer holidays
- Staffordshire County Council SEND Consultation
- Updates from National Partners including NSPCC (Secondary), Brook, CEOP, Vaping Policy Guidance, Eat Like a Champ (Primary), and emotionally based school avoidance guidance
- Resources to support:
  - Islamophobia Month 1-30 Nov
  - Bonfire Night 5 Nov
  - Ditch the Blade (Knife Crime)
  - Anti-bullying week 14-18 Nov
  - Road Safety week 14-20 Nov
  - Friendship Friday 18 Nov
  - International Day for the Elimination of Violence against Women 25 Nov
- Safer Internet Day 2023 theme
- ...and PSHE series

## PSHE TRAINING

Increase knowledge around:

Prevent,  
Radicalisation and  
Terrorism

12th December 4-5pm  
via MS Teams

Book your place [here](#)



If you have any feedback, or would like support, advice or information around your PSHE education provision please email: [natalie@staffscvys.org.uk](mailto:natalie@staffscvys.org.uk)



# UPDATE FROM LOCAL PARTNERS

## CHILDREN'S COMMISSIONER THE BIG SUMMER SURVEY



The Children's Commissioner want to hear from 7-17 years old about family in their Big Summer Survey to find out more about their experience of the summer holidays, Families is a big part of the DfE's Statutory Guidance for RSHE and this activity can spark conversations about the holidays as well as provide an opportunity for children and young people to have their voices heard,

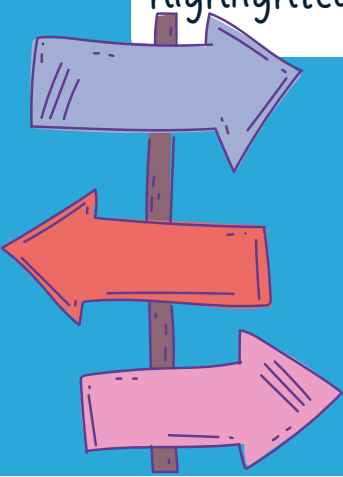
There is a video, presentation, FAQ for Schools and for children and a letter to parents and carers available on the [website](#) as well as the survey. The deadline is 17th October 2022 so you will need to be quick.

## SEND CONSULTATION

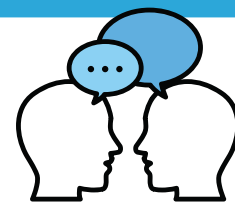
The council commissioners are keen to hear feedback about contract, projects or ideas where a need is identified in an education setting around SEND and Inclusion. To facilitate this a [jam board](#) has been created for comments - please let your name, job title and email address. To leave your comments use the highlighted symbols as shown in the picture.



Please ensure that these consultations opportunities are shared with all relevant colleagues in your setting



# UPDATE FROM NATIONAL PARTNERS



## NSPCC TALK RELATIONSHIPS

Secondary  
only

The NSPCC have launched "Talk Relationships", a resource to help secondary school teachers confidently deliver sex and relationship education. Our survey, last academic year, showed that this is the area that most secondary schools wanted support around.

Some of our schools locally participated in the pilot and have shared some great feedback about the course and accompanying lesson plans. The course is free for a limited time, the expected future charge is £25.



## BROOK AND GENDERED INTELLIGENCE CONSULTATION

Brook and Gendered Intelligence are working on a new online learning course on the topic of gender diversity. The course will equip professionals with the knowledge, confidence and skills to deliver on this subject, as well as providing advice and guidance on how to support trans and gender questioning children and young people.

They are welcoming ideas on what professionals would like to see covered within the course and what you and your colleagues need help with. Click [here](#) to share your views, thoughts and suggestions.



## CEOP CONSULTATION

CEOP want to consult with professionals who work with 9-12 years old to help create a new resource. To share your experiences to help shape the resource click [here](#).

CEOP are also setting up a SEND advisory group to ensure their resources are accessible and inclusive and are looking for professionals to share their experiences, expertise and insight and to pilot resources.

# ash.

## GUIDANCE ON DEVELOPING SCHOOL POLICIES ON VAPING

Action on Smoking and Health (ASH) is a public health charity set up by the Royal College of Physicians to end the harm caused by tobacco. Their 2022 guidance on developing school vaping policies is intended for Designated Safeguarding Leads, PSHE leads and others developing school policies on vaping, in the context of the far greater risk from smoking.

Please ensure that these key documents and updates are shared with all relevant colleagues in your setting



## EAT LIKE A CHAMP 2023

Eat like a Champ is a 6-week lesson programme designed to help children aged 9-10 learn about healthy, sustainable lifestyles. You can register now to access the free digital toolkit, lesson plans and teacher support.

Primary  
only



## EMOTIONALLY BASED SCHOOL AVOIDANCE GUIDANCE

The number of children and young people persistently absent from school has more than doubled since 2018.

Anna Freud, National Centre for Children and Families have created a new resource that looks at the issue of emotionally based school avoidance and how to address it. One recommendation is to have a whole-school approach to mental health and wellbeing, of which PSHE education plays an important role.

Staffordshire County Council also produced guidance in September 2020 to provide local support.

# ISLAMOPHOBIA MONTH 1-30 NOVEMBER



NEWSROUND HAS PRODUCED A CHILD-FRIENDLY GUIDE AROUND ISLAMOPHOBIA, INCLUDING A SHORT VIDEO.

SHOW RACISM THE RED CARD HAS PRODUCED A SERIES OF EDUCATION PACKAGES TO PROMOTE EQUALITY AND TACKLE RACISM. THEY HAVE PRODUCED AN ISLAMOPHOBIA EDUCATION PACK WHICH CONTAINS ACTIVITIES SUITABLE FOR WORK WITH UPPER KEY STAGE 2 TO ADULT.

THE CHILDREN'S COMMISSIONER FOR WALES HAS PUBLISHED TACKLING ISLAMOPHOBIA: A CHILDREN'S RIGHTS RESOURCE FOR SECONDARY SCHOOLS IN WALES. THIS RESOURCE COULD BE ADAPTED TO SUPPORT CHILDREN AND YOUNG PEOPLE IN YOUR SETTING.

## BONFIRE/FIREWORK NIGHT 5 NOVEMBER



To support education providers with conversations about Fire Safety, a localised Fire Safety and PSHE professional's guidance pack has been developed in partnership with Staffordshire Fire & Rescue Service which contains links to curriculum, best practice guidance and signposts to resources and further support.



*Click on the image to access the document via Google Drive.*



# KNIFE CRIME EDUCATION PACKAGE

## DITCH THE BLADE

It is important that there is a multi-agency approach to safeguarding children and young people from being involved in Knife Crime. To support education partners, we have sourced resources to support delivery in the classroom.

This is to be used in conjunction with the &PSHE Professionals' Pack which gives an overview of how this topic meets best practice curriculum outcomes from the PSHE Association and also the DfE's statutory guidance. The purpose of the pack is to provide information to support increasing the confidence of professionals delivering these sessions.

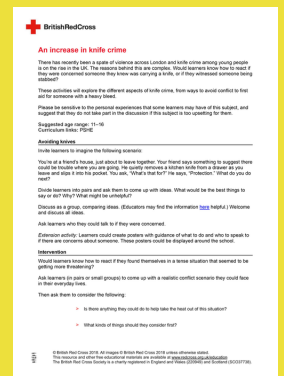
Staffordshire County Council and Staffordshire Police have also created a letter and would be grateful if providers could share this with their parents and carers [no earlier than week commencing 14th November 2022.](#)



Knife Crime and PSHE Professional Pack



Primary Education Pack: Play it Safe educational resources suitable for 6+, Knife Crime is not mentioned explicitly in some of the activities and where it is there is a warning to enable facilitators to use their own discretion as to whether the group is prepared to engage with such topics.



Secondary Education Pack containing British Red Cross resources that discusses different aspects of knife crime.

Click on the image to access the resource via Google Drive To help us to understand the impact of locally produced/sourced resources, we'd appreciate your time to complete this [short survey.](#)



# ANTI-BULLYING WEEK

## 14-18 NOVEMBER

Coordinated by the Anti-Bullying Alliance, the theme for this week's Anti-Bullying Week is "Reach Out". The aim of the week is to empower children and young people to do something positive to counter the harm and hurt that bullying causes. The week will kick off with Odd Socks Day on Monday 14th November, where adults and children wear odd socks to celebrate what makes us all unique.

Primary packs are for Key Stage 1 and 2. The Secondary Pack includes resources for use with Key Stage 3 or 4.

Each pack contains an assembly plan, lesson plan (could be two lessons), and cross-curricular activity ideas that are designed to encourage students to think about how we can unite to address bullying both online and offline.

BBC will be delivering a live lesson on Monday 14 November at 11am. This half-hour interactive programme for 7-11 years old, highlights some of the issues around bullying.

# ROAD SAFETY WEEK

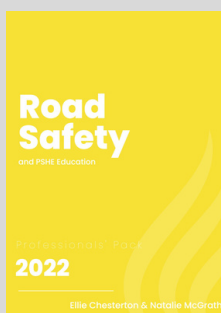
## 14-20 NOVEMBER

This year's theme is "Safe Roads for All" and is coordinated by Brake, You can sign up for details [here](#).

Locally, The Safer Roads Partnership offers a wide variety of resources, projects and presentations that schools can use free of charge. Road safety education is offered to every school in the county supported by the area Road Safety Education Officer. All age ranges are catered for, and topics covered include pedestrian training, transition from primary to high school, risk-taking as pedestrians, in-vehicle safety and pre-driver training for high school pupils.

A catalogue has been created for Primary Schools (Key Stage 1-2)

For secondary please contact your local Road Safety Education Officer for details on how they can support your setting providing details of the name of your school and the age-range/key stage you would like support with.



A Road Safety and PSHE Education Professional Pack has been created to support you to deliver Road Safety education in your setting.

Click on the image of the document to access via Google Drive

# FRIENDSHIP FRIDAY

## 18 NOVEMBER

To conclude Anti-Bullying week Friendship Friday was created to promote positive friendships and challenge bullying with children and young people.

Kidscape have created presentations for Primary - "What makes a good friend?" and for secondary "Friends and Frenemies" to support this event.

There is also a guide on how to create a kinder school community.

# INTERNATIONAL DAY FOR THE ELIMINATION OF VIOLENCE AGAINST WOMEN AND GIRLS (VAWG)

## 25 NOVEMBER

In June 2021 OFSTED issued their review of sexual abuse in schools and colleges paper; and in July 2021 the government published their tackling violence against women and girls' strategy, both papers recommended actions within PSHE education.

Following a successful bid to the Home Office's Safer Streets Round Three Fund, the Staffordshire and Stoke-on-Trent Violence Reduction Alliance (VRA) has developed a variety of PSHE resources to support this work.

The Primary school resource is a series of four comic books/lesson plans with animations exploring VAWG topics: bullying, photo sharing/social media, harassment & personal space. The comics are the part of the series, including County Lines, that has previously been shared, of VRA comics with characters based at Oatcake Primary School and you can place your order for these now. You can meet the characters [here](#).

For Key Stage 4 we have developed a virtual reality resource that explores behaviours often disproportionately experienced by women and girls, including catcalling, stalking and harassment, and sharing nudes or semi-nudes. Supporting guidance and lesson plans have been developed to support this resource.

If you would like further information on these resources, to place an order for the comic books or to express interest in the Virtual Reality please [email](#) the Police, Fire and Crime Commissioner's Office.



## NEXT MONTH...

Resources & Materials for:

World Aids Day - 1st December

Human Rights Day - 10th December

More & PSHE ....

WANT TO SHARE A RESOURCE,  
IDEA OR INFORMATION ABOUT  
YOUR SERVICE?  
LET ME KNOW AND I CAN  
INCLUDE IN UPCOMING  
EDITIONS

Publication date: 4th November 2022

## SAFER INTERNET DAY 2023

The theme for next year's Safer Internet Day has been announced as "Want to Talk about it? Making space for conversations about life online"

## ... & PSHE

Hopefully you have seen over the past couple of months our new series to help develop confidence and competence for professionals delivering PSHE and provide consistency in messaging for our children and young people across Staffordshire and Stoke on Trent.

These packs are all produced in collaboration with partners, and we would really value your thoughts and also which topics you would like prioritised. Please contact me to let me know your thoughts and views.

## DATES FOR YOUR DIARY...

The next PSHE Leads Network is 11th October 4-5pm via Teams with a focus on Assessment within PSHE. Links have been sent to those who booked via Eventbrite.

