



## COVERED IN THIS MONTH'S EDITION:

### Meeting Recordings

Upcoming Dates for your Diaries

What's Out There; Social Media, TV & News

Update from National Partners

- Sexual Extortion National Alert
- Middle East Conflict
- DfE Update
- Reminder about importance of language
- Update from ONS
- The Cass Review
- Safeguarding Update
- Mental Health Consultation
- CE Consultation
- Sexual Harassment
- Knife Crime Statistics
- Anti-Racist Bullying
- Online Sexual Abuse
- Teenage Conception Rates
- Early Years Resource to support Emotional Literacy
- Online Safety Training
- Media Literacy Training
- Research Opportunity for Young People into RSE
- Research Opportunity for Senior Leaders
- Online Safety Research
- Youth Violence Research
- Update from PSHE Association
- Research into Young People's Voices: PSHE

Update from Local Partners

- Update from STARS
- Ditch the Blade Campaign materials
- Community Vaccination Clinics
- Support following Suicide
- Breast Screening Video
- Update from Better Health Staffordshire
- Autism Inclusion Team Referral Update
- Bremen Friendship Camp - Applications Open
- Community Trail in South Staffordshire
- Local Newsletters and Updates
- Update from PSHE Education Service

Resources

- 1-30 June Pride Month
- 1-30 June Gypsy, Roma & Traveller History Month
- 5 June World Environment Day
- 10-14 June Healthy Eating Week
- 14 June World Blood Donor Day
- 15 June Clean Air Day
- 16-23 June Drowning Prevention Week
- 17-23 Refugee Week
- 19 June Brake's Kid Walk
- 21 June National Selfie Day
- New & PSHE: Eating Disorders

Training Opportunities

PSHE Conference - Save the Date

## MEETING RECORDINGS:

We have our own YouTube channel and all our recordings from our events can now be found on our website from last academic year.

[PSHE Leads Meetings](#)

[Bitesize Practice Development Webinars](#)

## UPCOMING DATES FOR YOUR DIARIES

PSHE Leads Network Meetings:

- 15th May 2024 4-5pm [The Role of a PSHE Lead](#)
- 11th July 2024 4-5pm - [Planning a PSHE Curriculum](#)

Bitesize Practice Development Sessions:

- 14th May 2024 4-5pm - [Jobs and Careers](#) (Careers Hub)
- 24th June 2024 4-6pm - [Gaming and Gambling Awareness](#) (YGAM)
- 9th July 2024 4-5pm [Supporting Boys and Young Men](#) (Men at Work CIC)

Conference

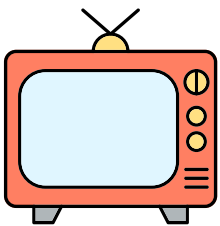
- 13th November 2024

Please let us know what our priorities should be for 2024-2025 Autumn Term

# WHAT'S OUT THERE...

Whilst it is important to ensure PSHE is part of a planned curriculum, it can also be used to address needs in a local context and form part of conversations we have with children and young people about their experiences and what's happening in the world around them.

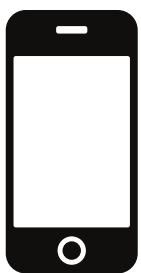
We have collated some examples of topics that are being covered in TV and media that young people may want to discuss.



- On Netflix, the main talking point has been their series Baby Reindeer which is an adaptation of Richard Gadd's autobiographical relationship with a female stalker and recounting experiences of sexual abuse.
- On Channel 4 a new drama The Gathering, follows a group of teenagers as they try to navigate the world of sex, school, smartphones and social media.
- I Kissed a Girl - a dating show for lesbian and bisexual women started on BBC iPlayer and BBC Three. The programme explores coming-out experiences from different religious and cultural backgrounds.
- In Eastenders, Nugget Gulati will be tempted to take steroids as part of Denzel Dane's ongoing steroid-dependency storyline. Denzel will start to experience problems related to his steroid use.
- In Hollyoaks, the village is experiencing the aftermath of some of the residents taking drugs.



- An MP raised during PMQs if vape companies should be banned from advertising on sports kits.
- Kris Hallenga, founder of Coppafeel who encourages younger people to check their chests for breast cancer, has died. Kris was diagnosed with secondary breast cancer in 2009 when she was 23.
- The BBC has reported on Germany's far-right ahead of European elections next month.



- AI-generated images of celebrities attending the Met Gala, including Katy Perry, who's own mother thought that the picture was real.
- Ofcom has warned social media sites they could be banned for under 18's if they fail to comply with new online safety laws.
- Bereaved families whose children's deaths were linked to social media have been sharing their stories with the BBC.
- Helldivers 2 has been released. The National College has created a guide for parents/carers and educators on the online safety risks and how to safeguard younger players.

# UPDATE FROM NATIONAL PARTNERS

## SEXUAL EXTORTION NATIONAL ALERT



It is likely you have already received, or seen coverage in the news about, a national alert from the National Crime Agency about the large increase in reports, globally, of children and young people being victims of financially motivated sexual sextortion, or how it's often referred to in the media "sextortion".

The alert sent to education settings across the UK, is in response to that threat. It provides an overview of what financially motivated sexual extortion may look like, guidance on how to support people affected by this crime, as well as preventative education materials, including a letter for parents and carers.

Locally professionals within Education should:

- Read the recently updated "Sharing Nudes and Semi-Nudes" guidance from the UK Council for Internet Safety (we shared this in last month's digest so hopefully you are familiar with it).
- Refer any concerns, if disclosed or discovered to Staffordshire Police and/or
  - SCAS, Staffordshire - 0300 111 8007 during opening hours, 0345 604 2886 or 07815 492 613 out of hours
- Complete the Risk Factor Matrix for any child/young person at risk of or exposed to Sexual Extortion (the CE policy under SSCB must be followed). This is also the referral method to access the CE Team. Completed forms should be sent to [cseinbox@staffordshire.gov.uk](mailto:cseinbox@staffordshire.gov.uk)
- Avoid using victim-blaming language and support children and young people in getting their images removed
  - Report Remove
  - Take It Down
  - Report directly to the platform or app that the incident has occurred on. For advice on how to report to major social media platforms, visit Internet Matters
- Review your settings PSHE curriculum to ensure children and young people can develop skills to respond safely to requests or pressure to provide nude or semi--nude images or videos to help reduce future incidents. Our new audit tools can support you with this - Primary Audit Tool, Secondary Audit Tool
- If you haven't already, sign up to the PSHE Education Service's Resource Library - to access resources to help you deliver sessions that develop key skills around recognising exploitation, and healthy behaviours, dealing with pressure, seeking support from trusted adults.
- Share letter from alert with parents/carers.

# MIDDLE EAST CONFLICT

The Home Office shared communications with Local Authority Prevent Leads earlier this month about the heightened tensions in the Middle East and the knock-on effect on inter-faith relations, hate crime incidents and exploitation by extremists here in the UK. This information has also been shared via Education Safeguarding with DSLs.

As Communities and Similarities and Differences are both topics covered within the PSHE curriculum we wanted to share the information relevant to schools with PSHE Leads too.

“Many young people will have a strong personal interest in these issues, and we are aware that in some schools this may lead to political activity by older pupils. Schools should ensure that political expression by pupils is done sensitively, avoiding disruption and feelings of intimidation or targeting for other pupils and staff. Schools should also make every effort to ensure that this activity does not extend to discriminatory bullying or involve the expression of antisemitic, anti-Muslim, or other discriminatory views. Where this does happen, the Department for Education expect schools to deal with these incidents with all due seriousness, in line with their behaviour policy.

Depending on the circumstances, safeguarding leads may also look to determine whether abusive and discriminatory views expressed or shared by pupils are representative of a wider susceptibility, and consider the appropriateness of engaging with support through the Prevent programme. We trust teachers and other staff to exercise their professional judgment about whether a referral to Prevent is appropriate, as they do for all other safeguarding risks. Further training and more discussion around radicalisation will help in addressing this, and advice and guidance is available on [Educate Against Hate](#) and [GOV.UK](#) to support safeguarding leads in making these decisions.

Schools should also be mindful of their legal duties regarding political impartiality and should always avoid working organisations that promote antisemitic, anti-Muslim or any other discriminatory views. The Department for Education has published clear and comprehensive guidance to help those working with and in schools to better understand legal duties on political impartiality. The guidance can be found here: <https://www.gov.uk/government/publications/political-impartiality-in-schools>”

**WHY?**  
The Israel-Hamas conflict is a global event that has caused significant loss of life and displacement. It is important for young people to understand the context of the conflict and the impact it has on people around the world.

**BEST PRACTICE - SAFE LEARNING ENVIRONMENT**  
It is important to create a safe learning environment to ensure young people can engage with the material in a respectful and constructive way. This includes encouraging open discussion and ensuring that all views are heard.

**RESOURCES**  
A list of resources is provided to support the subject. These include books, websites, and videos that provide a range of perspectives on the conflict.

**MANAGING EMOTIONS**  
The conflict can be a sensitive topic and it is important to ensure that young people are supported in managing their emotions. This includes providing a safe space for discussion and ensuring that all views are heard.

**TRAINING**  
The Department for Education has provided training for teachers and other staff to support them in delivering the subject. This includes training on how to manage sensitive issues and ensure a safe learning environment.

**PARENTS AND CARERS**  
It is important to engage with parents and carers to ensure that young people are supported in their learning. This includes providing information on the subject and ensuring that all views are heard.

**AGE APPROPRIATE NEWS SOURCES**  
A list of age appropriate news sources is provided to support the subject. These include websites and videos that provide a range of perspectives on the conflict.

We also want to remind education settings of the special edition of the PSHE Digest we published in October 2023 when the conflict first began.

The British Red Cross has also published a new resource for 10 - 19-year-olds. that can be used either within PSHE or Tutor Time.

# DFE UPDATE

The Department for Education has published non-statutory guidance "Protective Security and Preparedness for Education Settings" for early years, schools and alternative providers.

The guidance states that:

"You should discuss basic security messages and incident response plans as part of topics on personal safety or risk management in PSHE education."

As part of a range of engagement activities to consider, the document references Act for Youth's Run Hide Tell teacher guidance and lesson plans - these can be found in our Resource Library under Extremism for future reference.

We recommend that PSHE Leads work with their SLT to understand better the non-statutory guidance and how PSHE can support any implementation plan. as part of a whole-school approach.

## REMINDER ABOUT THE IMPORTANCE OF LANGUAGE

When discussing online safety how many of us use the terminology "online friends"? It's important within PSHE education that when we are discussing friendship and online safety we are ensuring that children and young people understand what is meant by the term "friend" in this context.

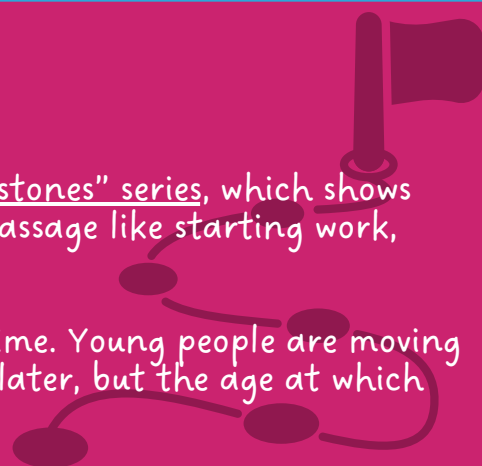
This blog from the NSPCC is a helpful reminder to us all to consider how the term "friend" could mask safeguarding concerns and also how we stay curious when children and young people talk about "friends" they have met online.

We should help children and young people understand what makes a good friendship and what healthy relationships look like through our PSHE education.

## UPDATE FROM THE ONS

The Office For National Statistics has updated their "Milestones" series, which shows the ages at which most people experience certain rites of passage like starting work, getting married and having children.

It also examines how these milestones have changed over time. Young people are moving out of the family home and becoming first-time mothers later, but the age at which people are becoming outright homeowners has fallen.





# THE CASS REVIEW

Dr Hilary Cass has published the final report of the Independent review of gender identity services for children and young people. The review, commissioned by NHS England, sets out what is known about young people seeking NHS support around their gender identity. The review makes recommendations on how services and treatments should be delivered to support children and young people questioning their gender identity or experiencing gender dysphoria.

Education settings are reminded that the non-statutory guidance, published by the Department for Education, was a draft version out for consultation and at this time there remains no guidance from the Government. This means settings should not implement the advice until a final version has been published. We will let you know when this is via the PSHE Digest.

There are other guidance documents that education settings may wish to reference when supporting children and young people questioning their gender identity or experiencing gender dysphoria including Brighton and Hove City Council's Trans Inclusion Schools Toolkit 2021.

# SAFEGUARDING UPDATE

The Department for Education has updated guidance on information sharing for people who provide safeguarding services to children, young people, parents and carers. The update includes more clarity on the use of consent and the legal frameworks needed to support the sharing of information.

PSHE education can help children and young people understand confidentiality and why professionals may share information with others.

# MENTAL HEALTH CONSULTATION

Schools in Mind have launched their annual survey for education staff. The survey takes 5 minutes to complete and the results will help Anna Freud to continue to support the mental health of staff and students across the UK.

The survey asks about themes relating to mental health, whole-school approaches, healthy relationships, and attendance.



# CHILD EXPLOITATION CONSULTATION



The University of Bedfordshire has launched a survey about its Practice Principles for child exploitation and extra-familial harm, published in March 2023. The Practice Principles, designed to assist multi-agency partners, were developed by the Tackling Child Exploitation (TCE) Support Programme consortium, led by Research in Practice, The Children's Society, and the University of Bedfordshire. The survey aims to find out if and how the Practice Principles are being used. It is aimed at professionals from all sectors.

# SEXUAL HARASSMENT

A new law is coming in to strengthen workers' protection against sexual harassment. This means that schools will have an increased responsibility to take "reasonable steps" to prevent sexual harassment.

Schools should ensure they have up-to-date anti-harassment policies and procedures in place. These should be clearly communicated to staff and steps should be taken to ensure all staff know how to raise a complaint of sexual harassment and understand the steps taken to investigate these concerns impartially and safely.

Harassment has no place within society and this law will help to strengthen a whole-organisation approach. This includes all staff being able to recognise and respond appropriately to incidents of harassment, having sessions for students on harassment making sure children and young people are aware of the education setting's policy and encouraging children and young people to take positive action against harassment this could include running an awareness campaign.

Young People, as part of their Living in the Wider World module, should gain an understanding of their rights under this new legislation.

We have resources in our library around harassment to help support you.

# KNIFE CRIME STATISTICS

The Office for National Statistics released their crime in England and Wales statistics last month.

These statistics highlighted a rise in knife crime by 7% in the last year.

The story in Staffordshire is different and it is important that children and young people, as one of our points within the local quality framework for PSHE education is:

"Challenge attitudes and values within society, such as perceived social norms and those portrayed within the media. "

In Staffordshire, we have seen a decrease of 9% in the rolling 12 months (09.05-23-09.05-24) children and young people must hear this local message to counter the national headlines as we know one of the main reasons people state they carry a weapon is for protection from others carrying.

See the Local Update - Ditch the Blade for details of resources to support the local Ditch the Blade campaign.

# ANTI-RACIST BULLYING

The Young Changemaker's Team at The Diana Award have released "An Educator's Guide to Anti-Racist Bullying". This guide, co-produced with young people, aims to support educators to understand, recognise and actively respond to racist behaviours in their school.



The number one category of hate crime across Staffordshire and Stoke-on-Trent is race. Implementing positive behaviours and acceptable early is important in creating a safer Staffordshire for all.

# ONLINE SEXUAL ABUSE

The Internet Watch Foundation (IWF) has published its annual report analysing the trends and data around child sexual abuse material online in 2023,

Findings from reports to the IWF show:

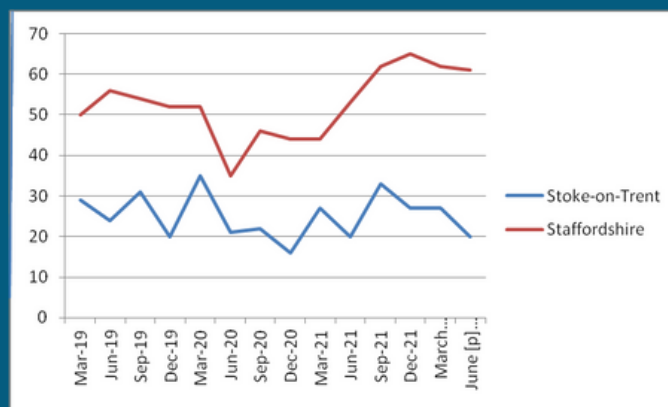
- 275,652 web pages were confirmed to contain child sexual abuse imagery
- There was a 25% increase in the number of images involving children aged 7-10 years
- Of the 275,652 web pages actioned during 2023, 92% were assessed as containing "self-generated" imagery.
- For the first time, the report shows that 3-6-year-olds are being targeted by "opportunistic" internet predators who manipulate them into sexual activities.

# TEENAGE CONCEPTION RATES

The ONS has published under 18 conception date for the first two quarters of 2022 (Jan-June).

There has been a national increase, continued from Q4 in 2021 (Sept-Dec) - this was the first increase in 14 years. Compared with the first two quarters of 2021 rates are also up.

Locally, the graph opposite shows the rates from March 2019 (pre-Covid) to date, which shows a positive decrease in Q2 but we cannot be complacent.





# EARLY YEARS RESOURCE TO SUPPORT EMOTIONAL LITERACY

The Education Endowment Foundation (EEF) has developed a resource to help support self-regulation and executive function in early childhood. The resource sets out five approaches for early educators to help children with their thoughts, actions, and emotional responses.

The approaches include: creating and navigating challenges; teaching self-monitoring and self-awareness; and creating a community of collaborative learners.

## ONLINE SAFETY TRAINING

ProjectEVOLVE has recognised the need for comprehensive professional development to help education staff in a rapidly evolving digital landscape and has launched ProjectEVOLVE EDU. This training platform is designed exclusively for educators, aiming to bridge the gap in effective staff training and empower professionals with the knowledge and skills necessary to navigate the digital landscape with confidence.

ProjectEVOLVE resources for children and young people can be found in our Resource Library so we are pleased to add this training offer to our training page on the website. This platform is not just a training platform but also support schools to enhance their own online safety standards.

As part of a free subscription schools can access the training on Copyright and Ownership - the other seven modules are part of the premium annual subscription package which is £200 + VAT.

## MEDIA LITERACY TRAINING

The Economist Educational Foundation has created a new, free e-learning course to support education professionals to bring discussions about the news into their classrooms.

Through the course, professionals will learn:

- Why it is important to support children and young people to have meaningful discussions about the news
- How to manage discussions about sensitive and complex topics in the classroom
- Tips for developing the essential skills to build news literacy
- A range of student-led discussion activities.

Each course module comes with an accompanying 60-90-minute lesson and is suitable for those working with children and young people aged 10 years and above.



## RESEARCH OPPORTUNITY FOR YOUNG PEOPLE INTO RSE

University of Birmingham researchers are conducting an online survey and follow-up focus groups with young people aged 13-18 in the UK about topics covered in their relationships and sex education (RSE) lessons. The survey questions focus on how young people learn about and express their sexuality & were created with the help of young people.

The research team is looking for RSE leads, teachers & youth groups to help arrange focus groups. These will involve 6-8 young people giving their views on national survey findings and will last 1 - 1.5 hours. Participants will receive a £10 gift card as thanks for their time. They want to arrange the following groups:

- Boys aged 13-15 years
- Boys aged 16-18 years
- Girls aged 13-15 years
- Girls aged 16-18 years
- Mixed gender group aged 13-15 years
- Mixed gender group aged 16-18 years
- LGBTQ+ young people aged 16-18 years

Findings from these much-needed studies will lead to a free resource for schools, youth groups & professionals supporting young people, co-created with leading charities such as Brook and The Lucy Faithfull Foundation. It is important to amplify youth voices in this area. The research team has a long history of doing research with young people, along with enhanced DBS checks.

Those interested are welcome to contact the research team directly for further information: Dr Willem Stander (Research Fellow) at [w.stander@bham.ac.uk](mailto:w.stander@bham.ac.uk)

## RESEARCH OPPORTUNITY FOR SENIOR LEADERS

The National Centre for Social Research (NatGen), in collaboration with University College London, funded by The Youth Endowment Fund and The Education Endowment Foundation are conducting an online survey to understand different types of behaviour policies being used in secondary schools. The study aims to investigate whether and how school behaviour policies impact on attendance, exclusions and school culture.

The survey takes 15 minutes to complete and participants will receive a £10 voucher as a thank you.

# ONLINE SAFETY RESEARCH

Ofcom has published two reports looking at children's media habits and attitudes across the UK in 2023-2024.

[Children and Parents: Media Use and Attitudes Report 2024](#)  
[Children's Media Lives Report](#)

Key findings from both reports show:

- 5- to 7-year-olds are becoming increasingly present online;
- Compared to boys, girls are more likely to say they have experienced 'nasty or hurtful' interactions in some online spaces;
- Children across all age groups perform potentially risky behaviours online;
- Children's caution about what they share publicly online has increased;
- Young people are finding it harder to identify what information to trust on social media compared to last year.

UK Safer Internet Centre and Childnet Youth Advisory Board have developed an [interactive and gamified resource](#) to help young people, aged 13-16 years, decide what they can trust when they are online. The resource can be adapted for older or younger young people too.

# YOUTH VIOLENCE RESEARCH

The Youth Endowment Fund has published findings into children and young people's experiences and opinions on youth violence in England and Wales.

Generative Artificial Intelligence (AI) was used to analyse the qualitative research undertaken with 4,600 young people aged 16-25. Findings include:

- [Social Media](#) is generally viewed as contributing to escalating real-life violence. This is echoed in the local research carried out by SCVYS into [Young People's Perceptions of Youth Violence](#).
- Respondents would [make changes in how police work to reduce violence](#). This includes increasing engagement between police and the community, increasing police presence and having police be involved in education around issues such as youth violence. Again this was highlighted locally with young people across Staffordshire and Stoke-on-Trent wanting to see more police out in the area as the third-highest response in what would make the respondent feel safer.
- [Education](#) - Respondents do not believe that schools are doing enough to prevent pupil involvement in violence. They identified lots of positive things to say about their school and the individual roles teachers play in their lives. The negative perceptions are driven by schools lacking effective education on youth violence, schools being seen as unsafe and a lack of provision for key challenges young people are facing such as mental health and bullying. We are working to create more resources for schools, including piloting the VR resources with selected education settings to learn more about how this technique can be utilised within PSHE.
- [Trusted Adults](#) - Young People identified that a lack of positive influence from adults can lead to involvement in violence. Our [activity pack "Trusted Adults"](#) can help children and young people to think about who these people are within their own lives.
- [Positive Activities](#) - Respondents believe that positive activities help deter youth violence. This was also identified locally. In Staffordshire, you can find information about [activities for young people in your local area here](#).

# UPDATE FROM PSHE ASSOCIATION

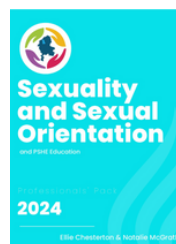
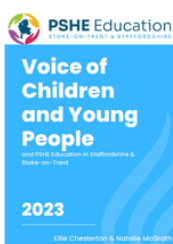
The PSHE Association, via their research and development arm Fully Human, has published a new blog exploring why ambitious visions for education remain neglected in the political landscape and what might be done to change that. This is the first in a series of articles based on their "How to Disagree Better About Education" report.

## RESEARCH INTO YOUNG PEOPLE VOICES: RSHE

The University of Birmingham has published a report about young people's insight on Relationship, Sex and Health Education (RSHE) and what more needs to be considered for the new draft guidance.

### Recommendations:

- *Listen to Young People* - Young people need to contribute to RSHE for it to be effective - our guidance on the Voice of Children and Young People will help education settings to find out the views of young people who attend their setting.
- *Early RSHE* - RSHE has to start from a young age and be incremental for it to be effective. This is why we support both primary and secondary settings and we also have some resources in our Resource Library that are suitable for Early Years to link the Early Years Framework with the RSHE Statutory Guidance.
- *The importance of diverse teaching methods in RSHE* - Diverse teaching methods and approaches has to underpin RSEH to enhance success outcomes and positively impact upon the lives of young people. This is why we have created and are proud to launch this month our latest guidance document on Active Learning Techniques which includes a toolkit on different methods and activities that can be utilised when delivering PSHE education.
- *LGBTQ+ Inclusive* All RSHE needs to include information about LGBTQ+ people. Our Sexuality and Sexual Orientation & PSHE pack includes guidance on creating a LGBTQ+ Inclusive Curriculum (from page 34)
- *Gender Inclusive* -All RSHE needs to include information and education on different genders.
- *RSHE needs to be taken seriously* - RSHE has to be on a par with other subjects so that it gains credibility. This is why we have created the PSHE Leads Network Meetings so that people in similar positions can learn from each other and why we attend School Leaders Meetings in both the City (SASCAL) and County to ensure that PSHE is given the attention it deserves.
- *Teacher/Educator Training* - Educators in RSHE, whether from school/college or an outside agency, have to be fully trained, knowledgeable and approachable. We've delivered training to Staffordshire Police, MPFT NCMP Team, and are starting with Staffordshire Fire and Rescue Service. It's why we create the ... & PSHE packs, host the PSHE Leads Network and Bitesize Practice Development Session and are looking at our future training offer.



We are committed in supporting education settings across Staffordshire and Stoke-on-Trent to develop and deliver quality PSHE education based on evidence and research.

If you need specific support with addressing any of the above recommendations please contact Natalie via email [natalie@staffscvys.org.uk](mailto:natalie@staffscvys.org.uk)



# UPDATE FROM LOCAL PARTNERS

## UPDATE TO STARS REFERRAL PROCESS



From 1st April 2024, there have been changes to the referral pathways in requesting support for children and young people at risk of or worried about their drug or alcohol use. MPFT now delivers the service.

MPFT are currently reviewing the online referral form, and we will update you when this is completed via the PSHE Digest. They have reviewed their paper referral form and have a new mailbox in place for any contact or queries. - [Starsyp@mpft.nhs.uk](mailto:Starsyp@mpft.nhs.uk)

## CAMPAIGN RESOURCES

#DITCH  
THE  
BLADE

Between Monday 13th and Sunday 26th May the partnership will be promoting the Ditch the Blade Campaign.

Staffordshire Police will be targetting young people through social media advertising to encourage them to seek help if they are being pressured or feel that they "need" to carry a knife for any reason. This may cause some disclosures within your setting.

The messages aimed at young people

- Most young people don't carry knives, it's not usual behaviour.
- When you carry a knife, you could risk 4 years in prison, being a victim of crime, your future employment and your ability to travel to other countries.
- Knife crime doesn't just affect the person who carries the knife, it can also affect their friends and family.
- You may think it keeps you safer but carrying can put you in danger as your own knife could be used on you if things escalate.
- Don't feel pressured to carry a knife, get support if you need it.

Organisations can access the resources for the campaign here. This includes videos created for Safe and Sound (Virtual) that look at consequences and peer pressure, that you might wish to use, or a rap by a local young person that you could play during tutor time and facilitate a discussion after. You may also want to share via your own social channels some of the promotional materials.



# COMMUNITY VACCINATION CLINICS

There are many reasons that children and young people may miss their school-aged vaccinations so the School-age Vaccination Service will be running catch-up sessions in the community over the coming months.

To access the service the child/young person must have a booked appointment, this can be done by calling 0300 124 0366, the lines are open Monday-Friday 8.30 am-12.30 pm.

Vaccinations available are:

- Measles, Mumps and Rubella(MMR) (where one or both doses of MMR have not been given) - Reception to Year 11 (4-16 years)
- HPV - For Year 8- Year 11 (12-16 years)
- Tetanus, Diphtheria and Inactivated Polio (Td/IPV) - Year 9 - Year 11 (13-16 years)
- Meningitis ACWY (MenACWY) - Year 9- Year 11 (13-16 years)

The clinics are being held in various locations as shown below:

- Tuesday 28th May 9.30 am-2.45 pm at Burton Fire Station, East Staffordshire
- Wednesday 29th May 9 am - 3.15 pm at Rising Brook Health Centre, Stafford
- Thursday 30th May 9.30 am - 2.45 pm at Smallthorne Health Centre, Stoke-on-Trent
- Saturday 13th July 9.30 am - 2.45 pm at Cannock Fire Station, Cannock Chase

Please ensure your parents and carers are aware of these clinics to ensure that as many children and young people are vaccinated as possible.

# SUPPORT FOLLOWING SUICIDE

Amparo provides support to anyone affected by suicide in Staffordshire and Stoke-on-Trent either recently or historically.

There are free 40-minute virtual briefing sessions available for professionals to learn more about the service and the role of Amparo, and how people can refer someone for support. Dates and times can be [found here](#).

# BREAST SCREENING VIDEO

Staffordshire and Stoke-on-Trent Integrated Care Board (ICB) have developed a video for people with a learning disability and autism. The video explains what will happen before, during and after a breast cancer screening appointment and includes easy-read images, text and a voiceover.

The video is aimed at those who would benefit from seeing the video before attending their appointment.

# UPDATE FROM Better Health Staffordshire

At a county-wide level Better Health Staffordshire have two key priorities to for 2024-2025:

- Healthy School Meals

As part of the work to increase levels of healthy weight among children, the partnership will be exploring the motivators and barriers to healthy school meals. This will involve listening to the voice of children, parents, carers, school staff and school food caterers.

- Better Health Staffordshire Digital Platform

This exciting development will:

- Enable and empower individual behaviour change by providing high-quality information, advice and guidance
- Enable and empower professionals and volunteers to deliver behaviour change messages and interventions through access to high-quality resources and tools

The Active Travel Team, in partnership with Sustrans have created a [survey](#) to help shape walking and wheeling routes across the county, focusing on Kidsgrove, Leek, Biddulph, Brereton, Burntwood, Cheslyn Hay, Great Wyrley, Norton Canes and Rugeley, The survey closes 31st May 2024.

The survey will help the Active Travel Team to understand what improvements are needed for each area to benefit local residents and will feed into the Local Transport Plan.

This is a great opportunity to engage children, young people and parents/carers and links to many curriculum outcomes relating to physical activity and mental wellbeing so we encourage you to share this with your communities.

If you would like more information about Better Health Staffordshire or to join their mailing list please email [BetterHealthStaffordshire@staffordshire.gov.uk](mailto:BetterHealthStaffordshire@staffordshire.gov.uk)

## AUTISM INCLUSION TEAM UPDATED REFERRAL PACKS

The Autism Inclusion Team (AIT) have updated the packs to make referrals to the Autism Inclusion Team.

Referrers should ensure that the Take Up Report is completed as a Word document. Referrals are not accepted via post,

- [AIT Permission Letter](#)
- [Media Permission](#)
- [AIT Take Up Report \(Referral Form\)](#)
- [Data Privacy Information](#)
- [AIT Procedures Chart](#)
- [AIT Guidance Notes for Referrals](#)

[The Updated Early Years Referral Package](#) can be found in School Bag (3rd May)

# BREMEN FRIENDSHIP CAMP 2024

Applications are now open for the Summer War Graves Camp at Cannock Chase.

This is an exciting and unique opportunity for 16-18 years old with a interest in history and/or internation exchange. The camp provides an opportunity for young people to make new friends, learn and experience new things and have a good time too.

The camp runs from Saturday 3rd - Thursday 15th August 2024 and is FREE to attend - all accomodation, activities and food costs have been funded.

Please share this [video of the 2023 camp](#) with your young people and display [this poster](#) around your settings so as many young people as possible are aware of this incredible local opportunity.

If you have any questions about the camp please email [sean@staffscvys.org.uk](mailto:sean@staffscvys.org.uk)

## COMMUNITY TRAIL IN SOUTH STAFFORDSHIRE

People in Perton are invited to try a [new community nature trail](#) developed by pupils at Perton First School, visitors and various creative groups that meet at the library.

The trail takes people on a gentle 10-minute walk from the library around the local lake, guided by various wildlife-themed signs made of recycled wood. Children can also pick up a free activity guide from the library and have a go at trail rubbings on the way around while learning about wildlife through stories and poetry.

This is a great way for children and young people to showcase their learning around physical activity, mental wellbeing and communities.

## LOCAL NEWSLETTERS/UPDATES

[Catch22's Research and Development Round up](#) - March 2024

- Information on exploitation, Children's Social Care, Domestic Abuse, School Attendance, Sexualised Behaviour Mental Health, Online Safety and more....

[Catch22's Research and Development Round up](#) - April 2024

- Information on exploitaiton, Children's Social Care, Cost of Living, LGBTQ+, Online Safety, Safeguarding, Substance Misuse, Youth Violence and more....

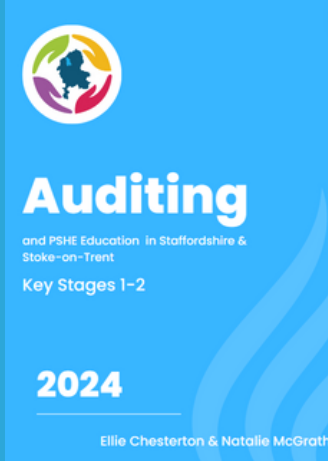
[New Era Bulletin](#)

- Shares an insight into performance between October-December 2023, and provides service users feedback.

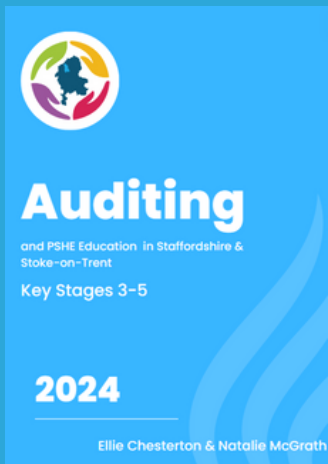


# PSHE Education

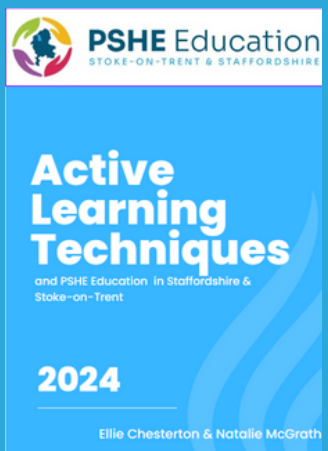
STOKE-ON-TRENT & STAFFORDSHIRE



This toolkit helps settings who deliver PSHE to Key Stages 1-2 to audit their whole school approach and curriculum against best practice principles and statutory required and develop an action plan that the PSHE Education Service can support to achieve.



This toolkit helps settings who deliver PSHE to Key Stages 3-5 to audit their whole school approach and curriculum against best practice principles and statutory required and develop an action plan that the PSHE Education Service can support to achieve.



This guidance document helps settings to meet point 9 within the local quality framework and utilise active learning techniques to encourage active participation. The documents shared the evidence as to why this is an effective pedagogical approach for PSHE education and provides practical examples of techniques that can be used.

We are delighted to be joined by YGAM again for our Bitesize Practice Development session following the positive feedback from those who joined the session last academic year. This two hour session will be held 24th June 2024, 4-6pm and upon completion participants will receive a City & Guilds certificate and access to over 1,000 resources. Here's a [flyer to advertise the session](#) to colleagues, or see next page. [Book your place here.](#)



# FREE online specialist gaming and gambling harm workshops

Ygam are working with **PSHE Education Stoke & Staffordshire** to offer a fully funded workshop delivered through the Young People's Gambling Harm Prevention Programme. This workshop is aimed at professionals who work with children or young people.

On completion you will receive a **City & Guilds Certificate and Digital Credential**, and have access to **over 1000 resources**, including 1:1 and small group **work activities** which you can download and use in your setting.

Mon 24th June  
4pm - 6pm



Scan the QR code or click [here](#) to register for your **FREE** place

For more about our work, visit [ygam.org](http://ygam.org)

What are the similarities between gaming and gambling?

What is a Loot Box?

Could you spot the signs of harm?



## Topics covered:

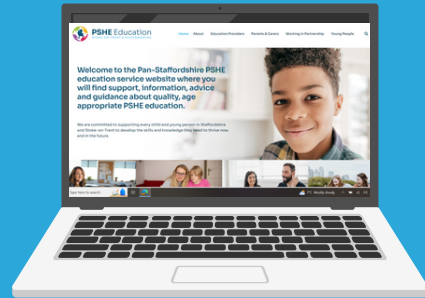
- Gaming and gambling harm
- Advertising
- Mental health and wellbeing
- Blurred lines between gaming and gambling
- How to spot the signs of harm
- Where to get help and support



# RESOURCES

Resources included in this section are linked to key dates of awareness or observation, that have relevance to PSHE. You can view the full year calendar [here](#).

WITH OVER 600 COLLEAGUES SIGN-UPS TO THE RESOURCE LIBRARY ON OUR [WEBSITE](#) MAKE SURE YOU ARE NOT MISSING OUT ON QUALITY ASSURED SOURCED AND LOCALLY PRODUCED PSHE RESOURCES LISTED BY TOPIC. MAKE SURE YOUR SETTING IS NOT MISSING OUT [REGISTER HERE](#).



## PRIDE MONTH - 1 - 30 JUNE

Pride Month provides an opportunity to celebrate diversity and create an inclusive environment within your setting. Children and young people can learn about different identities and LGBTQ+ history.

It is important to remember the guidance from the Department for Education:

"In teaching Relationships Education and RSE, schools should ensure that the needs of all pupils are appropriately met, and that all pupils understand the importance of equality and respect. Schools must ensure that they comply with the relevant provisions of the Equality Act 2010.

Schools should ensure that all of their teaching is sensitive and age-appropriate in approach and content. At the point at which schools consider it appropriate to teach their pupils about LGBT, they should ensure that this content is fully integrated into their programmes of study for this area of the curriculum rather than delivered as a stand-alone unit or lesson."

[The Proud Trust](#) has specific and inclusive resources for [primary](#) and [secondary](#). This includes details of their Rainbow Flag Award, a LGBT+ inclusion framework for schools.

[Diversity Role Models](#) have videos of [Role Model Stories](#) with accompanying teacher resources, that explore different themes. They have also created [The Upstander Animation Series](#) for primary schools, which addresses respect, differences and stereotypes.



Our Sexuality and Sexual Orientation & PSHE pack contains information to help professionals feel more confident teaching in these topics. These can be utilised in creating in-house CPD. The pack also includes guidance on creating an inclusive curriculum.

There are Pride events planned around the county, we are currently aware of:  
Stoke-on-Trent - 15th June 2024, Hanley Park  
Burntwood - 26th July 2024  
Lichfield - 19th-21st July 2024  
Stafford - 10th August 2024, Victoria Park  
Tamworth - 13th July 2024, The Castle Grounds

## GYPSY, ROMA AND TRAVELLER HISTORY MONTH - 1-30 JUN

The aims of Gypsy, Roma and Traveller History Month is to raise awareness of these communities and their contributions to society and to offset negative stereotypes and prejudices.

Our Hate Crime resources (Similarities and Differences in the Resource Library) help introduce the themes of stereotypes and prejudices in primary schools and within the secondary packages we continue to empower young people to create communities based on inclusivity and equality.

KS1 - Similarities and Differences

KS2 - Prejudice

KS3 - Hate Crime

KS4 - Hate Crime

KS5 - Changing Our Communities

The Traveller Movement has some suggestions on promoting Gypsy, Roma and Traveller History Month within your organisation.

Friends, Families and Travellers also provide teaching resources including books and media.

## WORLD ENVIRONMENT DAY - 5 JUN

The United Nations designated this day to highlight that the protection and health of the environment is a major issue, which affects the well-being of people and economic development.

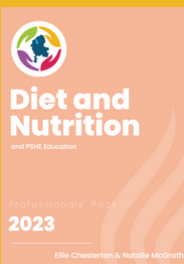
In the recent Make Your Mark vote, over 10% of respondents from Staffordshire voted for Climate and Environment as an issue that needs addressing.

The WWF has resources for primary and secondary schools that put sustainability at the heart of your setting.

The Countryside Classroom's resource has everything needed to conduct a litter pick (sign-up required)- this can also be linked to conversations around anti-social behaviour. Our Comic Book resource featuring Zane could support children aged 9-11 years and film for 11-14 years old both feature the possible impact of littering.



## HEALTHY EATING WEEK - 10-14 JUN



We have our Diet and Nutrition & PSHE pack to equip professionals to understand the learning objectives and provide information to support these outcomes to be met.

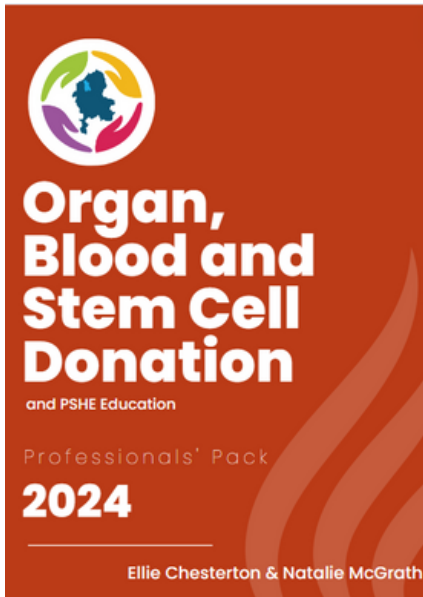
MPFT joined us for our Bitesize Practice Development Session that is still available to view on our YouTube channel.

This year's theme is "Give it a Go" - this could be having one extra portion of fruit or vegetables, trying a new recipe or reducing food waste.

Food a Fact for Life have created resources for Early Years, Primary, Secondary and Youth Organisations. Sign-up is required to receive these resources.



## WORLD BLOOD DONOR DAY - 14 JUNE



We are delighted to launch the **Organ, Blood, and Stem Cell Donations & PSHE pack** to add to our growing collection.

This pack provides key information to help increase the knowledge and confidence of professionals delivering PSHE around this topic. The pack highlights the learning outcomes for both primary and secondary phases of education.

We have a dedicated area to Organ, Blood and Stem Cell Donation within our [Resource Library](#), this contains resources from the NHS Blood and Transplant and Team Margot for ages 5-16 years.

## CLEAN AIR DAY - 15 JUN

This is a good opportunity to inspire people to take simple steps to protect their health from air pollution.

Cleaning up the air is good for people in many ways, it not only benefits physical health (asthma, heart disease and cancers) and the environment but can also protect mental and brain health.

Encourage your school community to walk, wheel or use public transport if possible to get to school on this day.

KentAir has created a [resource for primary schools](#) to help children understand more about air pollution and its effects on people's health and the environment.

## DROWNING PREVENTION WEEK - 16-23 JUN

Across Staffordshire, there are several rivers, lakes, canals that could be risky. PSHE Leads should ensure that their curriculum reflects their local risks and ensure that there are opportunities for children and young people to develop the knowledge and skills on how to manage these risks. This includes risks around playing near or on frozen water, how to keep safe in and around water. This topic has strong links between PSHE and the PE curriculum.

[Swim England](#) has Water Safety Resources for Primary Settings.

The Royal Life Saving Society UK has [specific resources](#) for this week, alongside resources on their website for [Early Years](#), [Primary](#) and [Secondary](#) phases of [education](#) that can be used in formal and informal settings. They have also worked with the Youth Sports Trust to create specific [SEND resources](#) to ensure water safety messaging is accessible for all.

The RNLI has produced a spiral curriculum with resources for [3-7 years](#), [7-11 years](#), [11-14 years](#) and [14-18 years](#).

## REFUGEE WEEK 17-23 JUN

The theme for Refugee Week 2024 is "Our Home" considering how places and communities are more welcoming, safe and sustainable for all.

[Click here for the Refugee Week pack for Children & Young People.](#)

Unicef has a [series of assemblies for Primary schools](#) which focus on various articles of the Convention and links them to events and days of recognition. An assembly for World Refugee Day (20th June) is found on Page 53 and explores:

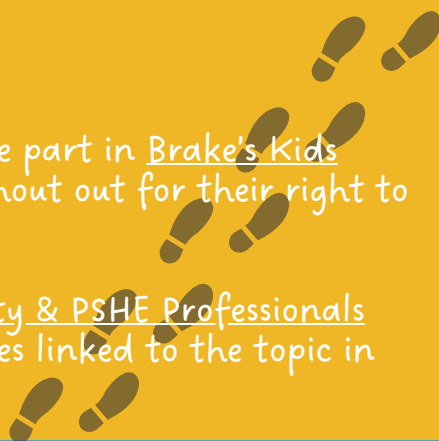
- Article 7 Children have the right to acquire a nationality and, as far as possible, the right to know and be cared for by their parents.
- Article 22 Children who are refugees have the right to special protection and help. Refugee children are entitled to all the rights in the Convention wherever they are.
- Article 38 Children in war zones should receive special protection.



## BRAKE'S KID WALK - 19 JUN

Every year, thousands of primary school children take part in [Brake's Kids Walk](#) to learn important road safety messages and shout out for their right to make safe and healthy journeys.

Locally, we have produced and shared the [Road Safety & PSHE Professionals Guidance](#), which is available, along with other resources linked to the topic in the [Resource Library](#).



## NATIONAL SELFIE DAY - 21 JUN

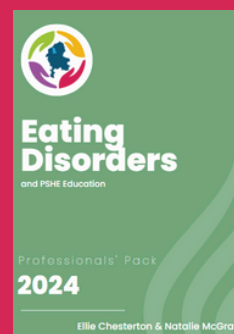
Whilst the message of National Selfie Day is to "snap a pic of yourself and post it social media" we can use this key date to explore ways to keep safe online including youth-produced imagery.

The Centre for Literacy in Primary Education produced some [teaching notes](#) (suitable for 8-13-year-olds) for Safer Internet Day using the book "Troll Stinks" which explores online safety, selfies and mobile phones.

We have previously shared a Comic book, animation and accompanying lesson plan, as part of our VAWG series, developed with The Staffordshire Violence Reduction Alliance that explores the impact of photo sharing. These are available in the [Resource Library](#) in Online Safety.

For KS3+, the Childnet [Sexting - "Just Send It" lesson and accompanying film](#) explores the issue of sexting.

## NEW ...& PSHE PACK



We are delighted to launch the [Eating Disorders & PSHE pack](#) to add to our growing collection. This pack provides key information to help increase the knowledge and confidence of professionals delivering PSHE around this topic.

We have a dedicated area to Eating Disorders within our [Resource Library](#) where this pack is housed, along with other supporting materials.



# TRAINING OPPORTUNITIES

Whilst we always try and source resources and training at no cost, we recognise that some organisations do have a small budget to support their PSHE delivery. Here are some upcoming training opportunities available both for free and a cost, both locally and nationally. Click on links for bookings and further information.

TOPIC	DATE/TIME	ORGANISATION	COST	OVERVIEW
GAMBLING	VARIOUS	<a href="#">YGAM</a>	FREE	THIS 90 MINUTE INTRODUCTORY WORKSHOP IS PART 1 OF 2 OF OUR FULLY FUNDED CITY & GUILDS ASSURED TRAINING AND IS OPEN TO TEACHERS, YOUTH WORKERS AND FORWARD FACING PROFESSIONALS WHO WORK DIRECTLY WITH CHILDREN AND YOUNG PEOPLE AND ARE ABLE TO DELIVER SESSIONS TO THEM ABOUT GAMING AND GAMBLING HARM.
SEXUAL ABUSE	VARIOUS	<a href="#">CEOP</a>	£150	A ONE DAY ONLINE COURSE FOR PROFESSIONALS TO GAIN AN UNDERSTANDING OF ONLINE SEXUAL ABUSE. ENABLES PARTICIPANTS TO IDENTIFY KEY STRATEGIES TO ENSURE ONLINE CHILD SEXUAL ABUSE IS INCLUDED AS PART OF A WHOLE-ORGANISATION APPROACH TO SAFEGUARDING AND PROTECTING CHILDREN AND YOUNG PEOPLE
ONLINE SAFETY	VARIOUS	<a href="#">CEOP</a>	£150	PROFESSIONALS MUST ATTEND UNDERSTANDING ONLINE CHILD SEXUAL ABUSE TRAINING (ABOVE) FIRST. THIS TRAINING ENABLES PARTICIPANTS TO BECOME LEADS FOR TRAINING AND INFORMATION RELATING TO ONLINE CHILD SEXUAL ABUSE
RSE FOR SEND	FROM 9TH MAY	<a href="#">SEX EDUCATION FORUM</a>	£575	PROGRAMME OF 20 HOURS OF EXPERT SEND SPECIALIST RSE TRAINING THAT INCLUDES ACTIVITIES TO USE IN OWN SETTING, GUIDANCE AND SIGNPOSTING TO RELEVANT RESOURCES AND OPPORTUNITIES FOR PRACTICE-SHARING AND PROBLEM-SOLVING WITH OTHER RSE LEADS.
TRAUMA-INFORMED	16 MAY 5-6:30 PM	<a href="#">UK TRAUMA COUNCIL</a>	FREE	THIS WEBINAR WILL EXPLORE WHAT COMPLEX TRAUMA MEANS AND THE IMPACT ON CHILDREN AND YOUNG PEOPLE
ONLINE SAFETY	21ST MAY 2-3PM	<a href="#">NSPCC</a>	FREE	THIS WEBINAR, DESIGNED FOR PROFESSIONALS, PARENTS/CARERS, COMMUNITY MEMBERS, WILL TEACH PARTICIPANTS TO HELP CHILDREN AND YOUNG PEOPLE EXPLORE THEIR FAVOURITE APPS, GAMES AND SITES SAFELY.



TOPIC	DATE/TIME	ORGANISATION	COST	OVERVIEW
RSE FOR SEND	FROM 9TH MAY	<u>SEX EDUCATION FORUM</u>	£575	PROGRAMME OF 20 HOURS OF EXPERT SEND SPECIALIST RSE TRAINING THAT INCLUDES ACTIVITIES TO USE IN OWN SETTING, GUIDANCE AND SIGNPOSTING TO RELEVANT RESOURCES AND OPPORTUNITIES FOR PRACTICE-SHARING AND PROBLEM-SOLVING WITH OTHER RSE LEADS.
BULLYING	17 JUNE 3.30- 5.30 PM	<u>ANTI-BULLYING ALLIANCE</u>	£116.20	HELPS PARTICIPANTS TO DEVELOP THEIR KNOWLEDGE AROUND BULLYING AND THOSE MOST AT RISKS AND IMPROVES CONFIDENCE IN PREVENTING AND RESPONDING TO BULLYING
BULLYING	26 JUNE 8.30 -11.30 AM	<u>ANTI-BULLYING ALLIANCE</u>	£116.20	HELPS PARTICIPANTS TO DEVELOP THEIR KNOWLEDGE AROUND BULLYING AND THOSE MOST AT RISKS AND IMPROVES CONFIDENCE IN PREVENTING AND RESPONDING TO BULLYING
SAFEGUARDING	26 JUNE 9.30AM-5PM	<u>NSPCC</u>	EARLY BIRD (TILL 21/4/24) £200 (SAVE £60)	THE CONFERENCE WILL BRING TOGETHER THOUGHT LEADERS, GOVERNMENT REPRESENTATIVES AND FRONT-LINE WORKERS TO SHARE THE LATEST RESEARCH AND INNOVATIONS IN CHILD PROTECTION TO SUPPORT PRACTITIONERS TO INFLUENCE A NATIONAL STRATEGY FOR CHILDREN. THIS EVENT WILL BE HOSTED ONLINE.
MENTAL HEALTH	10TH JULY 10AM-4.45PM (MANCHESTER)	<u>SAFEGUARDING NETWORK &amp; ANNA FREIUD</u>	FROM £195	THIS 90 MINUTE INTRODUCTORY WORKSHOP IS PART 1 OF 2 OF OUR FULLY FUNDED CITY & GUILDS ASSURED TRAINING AND IS OPEN TO TEACHERS, YOUTH WORKERS AND FORWARD FACING PROFESSIONALS WHO WORK DIRECTLY WITH CHILDREN AND YOUNG PEOPLE AND ARE ABLE TO DELIVER SESSIONS TO THEM ABOUT GAMING AND GAMBLING HARM.



**SAVE THE DATE**

## PAN-STAFFORDSHIRE PSHE EDUCATION CONFERENCE

**13TH NOVEMBER  
2024**

More details and booking information will be shared soon, in the meantime please make a note of the date in your diary

# E-LEARNING COURSES

TOPIC	PROVIDER	COST	OVERVIEW
BODY IMAGE	<a href="#">DOVE/NIKE</a>	FREE	EQUIPS EDUCATORS WITH THE KNOWLEDGE, TOOLS AND INSPIRATION TO IMPROVE BODY CONFIDENCE IN THE YOUNG PEOPLE THEY WORK WITH
BULLYING	<a href="#">EQUALITEACH</a>	FREE	SUPPORTS STAFF TO BE ABLE TO RECOGNISE AND RESPOND EFFECTIVELY TO INCIDENTS OF PREJUDICE AND BULLYING.
CHANGE AND LOSS	<a href="#">WINSTON'S WISH</a>	FREE	FREE BEREAVEMENT TRAINING TO HELP THEM TO UNDERSTAND HOW TO SUPPORT GRIEVING CHILDREN AND YOUNG PEOPLE IN THEIR SCHOOL
GAMBLING	<a href="#">ENGLISH GAMBLING EDUCATION HUB</a>	FREE	PREVENTING GAMBLING HARMS IN 18-25 YEAR OLDS – NOT IN EDUCATION, EMPLOYMENT OR TRAINING (NEET) AND EMPLOYED
LEADING PSHE	<a href="#">NATIONAL COLLEGE</a>	£300 + VAT	THIS RSHE/PSHE LEAD TRAINING COURSE PROVIDES THE KNOWLEDGE AND SKILLS NEEDED TO UNDERSTAND THE STATUTORY RSHE REQUIREMENTS, RECOMMENDED PSHE EXPECTATIONS AND DRIVE LOCAL ADAPTATION IN YOUR SCHOOL OR COLLEGE
MEDIA LITERACY	<a href="#">THE ECONOMIST EDUCATION FOUNDATION</a>	FREE	DESIGNED TO SUPPORT TEACHERS TO BRING DISCUSSIONS ABOUT THE NEWS INTO THEIR CLASSROOMS.
MENTAL HEALTH SIMILARITIES & DIFFERENCES	<a href="#">ANNA FREUD</a>	FREE	DESIGNED TO IMPROVE EDUCATION STAFF'S UNDERSTANDING OF THE IMPACT OF RACISM AND MENTAL HEALTH
RSE	<a href="#">BROOK LEARN</a>	FREE - £40	A VARIETY OF E-LEARNING COURSES FROM HOW TO DELIVER RSE TO TOPIC SPECIFIC COURSES (ABORTION, CONSENT, CONTRACEPTION AND MORE)
RSE	<a href="#">NSPCC</a>	£9.50	ONLINE TRAINING TO SUPPORT SECONDARY SCHOOL TEACHERS AND LEADERS TO DELIVER INCLUSIVE SEX AND RELATIONSHIPS EDUCATION. INCLUDES ACCESS TO LESSON PLANS AND A DEDICATED SUPPORT HELPLINE.
RSE IN CATHOLIC SCHOOLS	<a href="#">CATHOLIC EDUCATION SERVICE (TEN TEN)</a>	FREE	ONLINE TRAINING TO SUPPORT CATHOLIC EDUCATION SETTINGS TO DELIVER RSHE IN A WAY THAT IS ALIGNED TO THEIR RELIGIOUS VALUES
SEXUALISED BEHAVIOUR	<a href="#">NSPCC</a>	£35	TWO HOUR ONLINE COURSE TO HELP MANAGE HARMFUL SEXUALISED BEHAVIOURS IN PRIMARY OR SECONDARY SCHOOLS IN THE UK

## NEXT MONTH...

Resources & Materials for:

- 1-31 July Plastic Free July
- 1-31 July Talk To Us (Samaritans)

WANT TO SHARE A RESOURCE,  
IDEA OR INFORMATION ABOUT  
YOUR SERVICE?  
LET ME KNOW AND I CAN  
INCLUDE IN UPCOMING  
EDITIONS



I HAVE BEEN ENCOURAGING OUR SCHOOLS TO TAKE TIME TO  
NOTE AND ENGAGE IN THE GREAT WORK YOU ARE DOING  
MAT CEO, STAFFORDSHIRE



We love hearing how the PSHE Education Service is supporting you, your setting and the children and young people you work with.

Please let us know you have used any of our resources, information in the digest in your own practice so we can share with others.

If you would like to share any feedback or request specific support, advice or guidance please contact us directly:

[natalie@staffscvys.org.uk](mailto:natalie@staffscvys.org.uk)

